

WEST YORKSHIRE SPINNERS

Free
Pattern

Elements

DK

Lyra

Feather Lace Yoke Top
by Sarah Hatton

 Tencel™

Feels so right



Elements

DK

A Naturally Harmonious Blend

Soft and smooth to the touch with a luxurious sheen and flattering drape, TENCEL™ Lyocell boasts many properties which perfectly complement wool.

Harvested from sustainably managed wood sources, TENCEL™ Lyocell is certified as biodegradable and compostable, making this yarn revertible back to nature.

Grazing in the beautiful wilderness, Falkland Islands sheep enjoy some of the greenest conditions and produce the finest fleece, prized for its purity and handle.

Fully traceable and derived from natural origins, this unique fibre blend leads to a yarn with great strength, natural breathability and gentleness against the skin.



Elements DK – Lyra Feather Lace Yoke Top



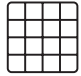



Tension

It is essential to work to the stated tension in order to achieve the desired fabric and garment size. You should always start by knitting a tension square before knitting the full garment.

If you have fewer stitches than stated you will need to go down needle sizes until the correct tension is achieved. If you have more, you will need to go up needle sizes. Please check individual patterns for tension before starting the garment.

Finishing

Using Kitchener stitch to join underarm seams. Once your garment is completed it is essential to block your knitting. Pin your garment out to the size stated in the pattern, cover with a damp cloth and leave to dry.

60% LYOCELL 40% FALKLAND ISLANDS WOOL		
DK	 4mm US6	 4mm US6
Tension 10cm/4"sq	112 Metres	122 Yards
 22 sts	50g Ball	
 Hand wash only Reshape whilst damp Do not tumble dry		
60% LYOCELL 40% WOOL/WOLLE/LANA/LAINE/ULL/VILLA		

Abbreviations

beg	beginning
cm	centimetres
cont	continue
dec	decrease(ing)
DPNs	double pointed needles
foll	following
g	grammes
in	inch(es)
inc	increase(ing)
K	knit
LH	left hand
m1	make one stitch (by picking up loop between last and next stitch and work into the back of this loop)
mm	millimetres
P	purl
patt	pattern
pssso	pass slipped stitch over
rem	remain(ing)
rep	repeat
RH	right hand
rnd(s)	round(s)
RS	right side
sl1	slip 1 stitch knitwise
sm	slip marker
st(s)	stitch(es)
st-st	stocking stitch (every round knit) when working in rounds
tbl	through back of loops
tog	together
WS	wrong side
yfwd	yarn forward
O	no stitches, times, rows or rounds



Lyra

Feather Lace Yoke Top by Sarah Hatton

West Yorkshire Spinners - Elements DK



Palm Leaf (1104)
6 [7:8:9:10:11:12] x 50g

Measurements

To Fit Chest

in	28/30	32/34	36/38	40/42	44/46	48/50	52/54
cm	71/76	81/86	91/97	102/107	112/117	122/127	132/137

Actual Size

cm	84	94	105	115	125	135	145
----	----	----	-----	-----	-----	-----	-----

Full Length (approximately)

cm	56	58	60	62	64	66	68
----	----	----	----	----	----	----	----

Long Sleeve Length

cm	43	46	46	47	48	48	48
----	----	----	----	----	----	----	----

Short Sleeve Length

cm	5	5	5	5	5	5	5
----	---	---	---	---	---	---	---

Level: ● ● ● ● ○

Equipment

One set of 3.25mm (UK10/US3) DPNs or 40cm long circular knitting needles for sleeves

One 3.25mm (UK10/US3) circular knitting needle 60cm long for body

One 3.75mm (UK9/US5) circular knitting needle 60cm and 80cm long for yoke lace pattern

One 4mm (UK8/US6) circular knitting needle 60cm and 80cm long for body and yoke

One set of 4mm (UK8/US6) DPNs or 40cm long circular knitting needles for sleeves
Stitch holders and stitch markers

Tension

22 sts and 28 rows to 10cm measured over stocking stitch using 4mm needles or size needed to achieve stated tension.

It is essential to work to the stated tension to ensure success.

Special Abbreviations

When working short rows work as follows:

Wrap and turn (w&t) on knit rows.

Take yarn between needles to front of work, slip the next st purlwise from the LH to RH needle, take yarn between needles to back of work, slip the st back to the LH needle, turn your work.

Wrap and turn (w&t) on purl rows.

Take yarn between needles to back of work, slip the next st purlwise from LH to RH needle, take yarn between needles to front of work, slip the st back to LH needle, turn your work.

Knit stitch and wrap together on a knit row.

Insert RH needle up through the wrap then into the st. Knit stitch and wrap together.

Purl stitch and wrap together on a purl row.

Insert RH needle into wrap from back of work, lift wrap onto LH needle, purl st and wrap together.

Written Pattern

For 1st and 2nd sizes

Round 1: K6, yfwd, sl1, K1, pssso, K6. 14 sts.

Round 2 and all even-numbered rounds: Knit.

Round 3: K4, K2tog, yfwd, K1, yfwd, sl1, K1, pssso, K5.

Round 5: (Yfwd, sl1, K1, pssso, K2, K2tog, yfwd, K1) twice.

Round 7: K1, yfwd, sl1, K1, pssso, K3, yfwd, sl1, K1, pssso, K2, K2tog, yfwd, K2.

Round 9: Sl1, K1, pssso, yfwd, sl1, K1, pssso, K5, K2tog, yfwd, K2tog, K1. 12 sts.

Round 11: (Yfwd, sl1, K1, pssso) twice, K3, (K2tog, yfwd) twice, K1.

Round 13: K1, (yfwd, sl1, K1, pssso) twice, K1, (K2tog, yfwd) twice, K2.

Round 15: (Sl1, K1, pssso, yfwd) twice, sl1, K2tog, pssso, (yfwd, K2tog) twice, K1. 10 sts.

Round 17: (Yfwd, sl1, K1, pssso) twice, K1, (K2tog, yfwd) twice, K1.

Round 19: K1, yfwd, sl1, K1, pssso, yfwd, sl1, K2tog, pssso, yfwd, K2tog, yfwd, K2.

Round 21: Sl1, K1, pssso, yfwd, sl1, K1, pssso, K1, K2tog, yfwd, K2tog, K1. 8 sts.

Round 23: K2, yfwd, sl1, K2tog, pssso, yfwd, K3.

Round 25: Sl1, K1, pssso, K1, yfwd, sl1, K1, pssso, K2tog, K1. 6 sts.

Round 27: K1, yfwd, sl1, K2tog, pssso, yfwd, K2.

Round 29: K2, yfwd, sl1, K1, pssso, K2.

Round 30: Knit.

For 3rd and 4th sizes

Round 1: K6, yfwd, sl1, K1, pssso, K6. 14 sts.

Round 2 and all even-numbered rounds: Knit.

Round 3: K4, K2tog, yfwd, K1, yfwd, sl1, K1, pssso, K5.

Round 5: (Yfwd, sl1, K1, pssso, K2, K2tog, yfwd, K1) twice.

Round 7: K1, yfwd, sl1, K1, pssso, K3, yfwd, sl1, K1, pssso, K2, K2tog, yfwd, K2.

Round 9: Sl1, K1, pssso, yfwd, sl1, K1, pssso, K5, K2tog, yfwd, K2tog, K1. 12 sts.

Round 11: (Yfwd, sl1, K1, pssso) twice, K3, (K2tog, yfwd) twice, K1.

Round 13: K1, (yfwd, sl1, K1, pssso) twice, K1, (K2tog, yfwd) twice, K2.

Round 15: (Sl1, K1, pssso, yfwd) twice, sl1, K2tog, pssso, (yfwd, K2tog) twice, K1. 10 sts.

Round 17: (Yfwd, sl1, K1, pssso) twice, K1, (K2tog, yfwd) twice, K1.

Round 19: K1, yfwd, sl1, K1, pssso, yfwd, sl1, K2tog, pssso, yfwd, K2tog, yfwd, K2.

Round 21: K2, yfwd, sl1, K1, pssso, K1, K2tog, yfwd, K3.

Round 23: Sl1, K1, pssso, K1, yfwd, sl1, K2tog, pssso, yfwd, K1, K2tog, K1. 8 sts.

Round 25: K3, yfwd, sl1, K1, pssso, K3.

Round 27: K2, yfwd, sl1, K2tog, pssso, yfwd, K3.

Round 29: Sl1, K1, pssso, K1, yfwd, sl1, K1, pssso, K2tog, K1.

Round 31: K1, yfwd, sl1, K2tog, pssso, yfwd, K2.

Round 33: K2, yfwd, sl1, K1, pssso, K2.

Round 34: Knit.

For 5th, 6th and 7th sizes

Round 1: K7, yfwd, sl1, K1, pssso, K7. 16 sts.

Round 2 and all even-numbered rounds: Knit.

Round 3: Sl1, K1, pssso, K3, K2tog, yfwd, K1, yfwd, sl1, K1, pssso, K3, K2tog, K1. 14 sts.

Round 5: (Yfwd, sl1, K1, pssso, K2, K2tog, yfwd, K1) twice.

Round 7: K1, yfwd, sl1, K1, pssso, K3, yfwd, sl1, K1, pssso, K2, K2tog, yfwd, K2.

Round 9: Sl1, K1, pssso, yfwd, sl1, K1, pssso, K5, K2tog, yfwd, K2tog, K1. 12 sts.

Round 11: (Yfwd, sl1, K1, pssso) twice, K3, (K2tog, yfwd) twice, K1.

Round 13: K1, (yfwd, sl1, K1, pssso) twice, K1, (K2tog, yfwd) twice, K2.

Round 15: (Sl1, K1, pssso, yfwd) twice, sl1, K2tog, pssso, (yfwd, K2tog) twice, K1. 10 sts.

Round 17: (Yfwd, sl1, K1, pssso) twice, K1, (K2tog, yfwd) twice, K1.

Round 19: K1, yfwd, sl1, K1, pssso, yfwd, sl1, K2tog, pssso, yfwd, K2tog, yfwd, K2.

Round 21: K2, yfwd, sl1, K1, pssso, K1, K2tog, yfwd, K3.

Round 23: Sl1, K1, pssso, K1, yfwd, sl1, K2tog, pssso, yfwd, K1, K2tog, K1. 8 sts.

Round 25: K3, yfwd, sl1, K1, pssso, K3.

Round 27: K2, yfwd, sl1, K2tog, pssso, yfwd, K3.

Round 29: Sl1, K1, pssso, K1, yfwd, sl1, K1, pssso, K2tog, K1. 6 sts.

Round 31: K1, yfwd, sl1, K2tog, pssso, yfwd, K2.

Round 33: K2, yfwd, sl1, K1, pssso, K2.

Round 34: Knit.

Yoke Top

Sleeves (both alike)

Using 3.25mm DPNs or 40cm circular needle, cast on 62 [68:72:78:82:88:94] sts.

Ensuring sts are not twisted, join to work in the round, place beg of round marker.

Rnd 1: *K1tbl, P1, rep from * to end.

Rnd 2: *K1, P1, rep from * to end.

These 2 rnds set rib.

Work in rib for 3cm.

Next Rnd: Rib 11 [6:8:11:5:8:11], (m1, rib 8) 5 [7:7:7:9:9:9] times, m1, rib to end. 68 [76:80:86:92:98:104] sts.

Change to 4mm DPNs or 40cm long circular needle and working in st-st (throughout) proceed as follows:

Knit 4 rnds.

Next rnd: Knit to 5 [5:6:6:6:7:8] sts before end of rnd, slip next 5 [5:6:6:6:7:8] sts and 5 [5:6:6:6:7:8] sts from beg of next rnd on a holder for underarm.

Place rem 58 [66:68:74:80:84:88] sts on holder separately for yoke.

Body

Using 3.25mm circular needle, cast on 184 [206:230:252:274:296:318] sts.

Ensuring sts are not twisted, join to work in the round, place beg of rnd marker.

Rnd 1: *K1tbl, P1, rep from * to end.

Rnd 2: *K1, P1, rep from * to end.

These 2 rnds set rib.

Cont in rib for 4 [4:4:5:5:5]cm.

Change to 4mm circular needle and cont in st-st until work measures 37 [38:38:39:39:40:41]cm.

Join Body and Sleeves

Next rnd: K87 [96:107:120:129:141:149], (K2tog) 0 [1:1:0:1:0:1] times, slip next 10 [10:12:12:12:14:16] sts onto a holder for underarm, knit across 58 [66:68:74:80:84:88] sts from first sleeve holder, K82 [91:101:114:123:134:141] from body, (K2tog) 0 [1:1:0:1:0:1] times, slip next 10 [10:12:12:12:14:16] sts onto a holder for underarm (includes the first 5 [5:6:6:6:7:8] sts from beg of rnd), knit across 58 [66:68:74:80:84:88] sts from sleeve holder (you should now be at the start of the back sts of body). 280 [316:340:376:408:436:460] sts.

Set up rnd (partial): K41 [46:51:57:62:67:71], place beg of rnd marker at centre back and remove any other markers.

Knit 4 [4:4:6:6:6] rnds.

Short Rows For Neck Shaping

Row 1 (RS): K15 [20:24:26:25:33:32], w&t.

Row 2 (WS): P30 [40:48:52:50:66:64], w&t.

Row 3 (RS): Knit to last RS wrapped st, knit next st with its wrap, K7 more sts, wrap next st and turn.

Row 4 (WS): Purl to last WS wrapped st, purl next st with its wrap, P7 more sts, wrap next st and turn.

Rep Rows 3 and 4 another 4 [4:5:5:6:6:7] times.

Next row (RS): Knit to last RS wrapped st, knit next st with its wrap, K7 [7:7:8:8:8:8] more sts, wrap next st and turn.

Next row (WS): Purl to last WS wrapped st, purl next st with its wrap, P7 [7:7:8:8:8:8] more sts, wrap next st and turn.

Next row (RS, partial): Knit to beg of rnd marker.

Resume working in the rnd.

Next rnd: Knit to end of rnd.

Work 4 [6:6:7:10:13:14] rnds.

For 1st size only

Next rnd: Knit.

For 2nd size only

Next rnd: (K2tog, K37, K2tog, K38) 4 times. 308 sts.

For 3rd and 5th sizes only

Next rnd: (K2tog, K [83:49]) [4:8] times. [336:400] sts.

For 4th size only

Next rnd: K2tog, K29, (K2tog, K30, K2tog, K29) 5 times, K2tog, K28. 364 sts.

For 6th size only

Next rnd: * K2tog, K19, (K2tog, K20) 8 times, K2tog, K19, rep from * once more. 416 sts.

For 7th size only

Next rnd: (K2tog, K37) twice, (K2tog, K36) 8 times, (K2tog, K37) twice. 448 sts.

For all sizes

Place Yoke Pattern

Change to 3.75mm circular needle and working from chart or written instructions for your size proceed as follows:

Next rnd: (Patt 14 [14:14:14:16:16:16] sts as set on rnd 1 for Lace pattern for your size) 20 [22:24:26:25:26:28] times.

Working decreases as given, work next 29 [29:33:33:33:33] rnds as set for Lace pattern for your size.

120 [132:144:156:150:156:168] sts.

For 1st, 2nd, 4th, 5th and 7th sizes only

Next rnd: (K2tog, K58 [20:11:23:10]) 2 [6:12:6:14] times. 118 [126:144:144:154] sts.

For 3rd size only

Next rnd: K2tog, K12, (K2tog, K12, K2tog, K13) 4 times, K2tog, K12. 134 sts.

For 6th size only

Next rnd: (K2tog, K17, K2tog, K18) 4 times. 148 sts.

For all sizes

Change to 3.25mm circular needle and work 3cm in rib as set on hem.

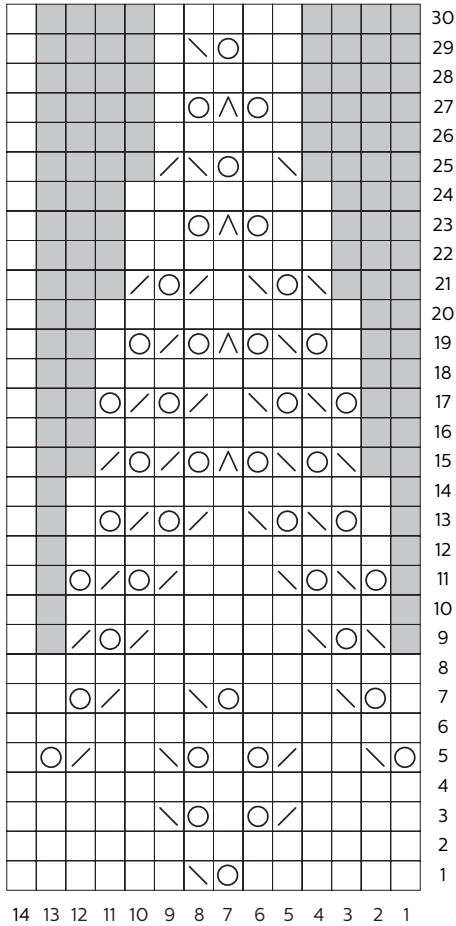
Cast off in rib.

Making Up

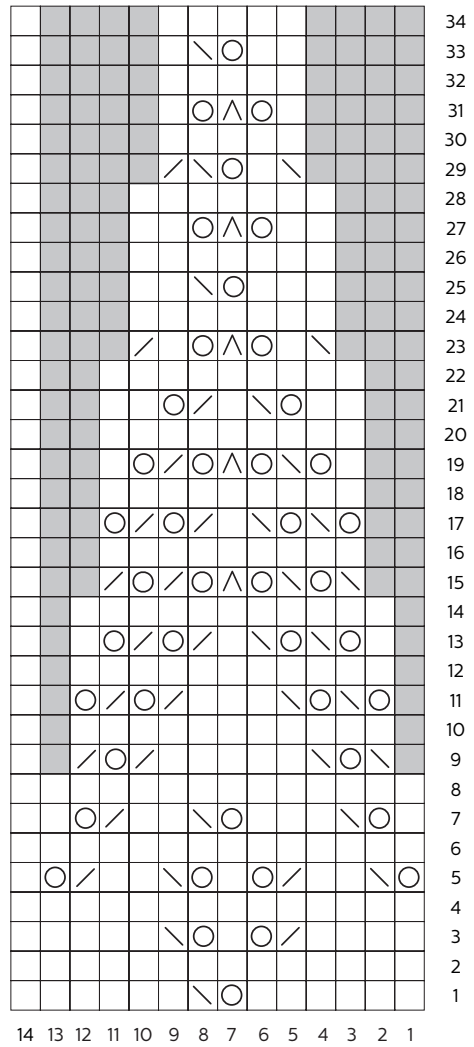
Using Kitchener stitch, join underarm stitches.

Pin your garment out to measurements, cover with a damp cloth and leave to dry.


Yoke Top Chart 1st and 2nd Sizes



Yoke Top Chart 3rd and 4th Sizes

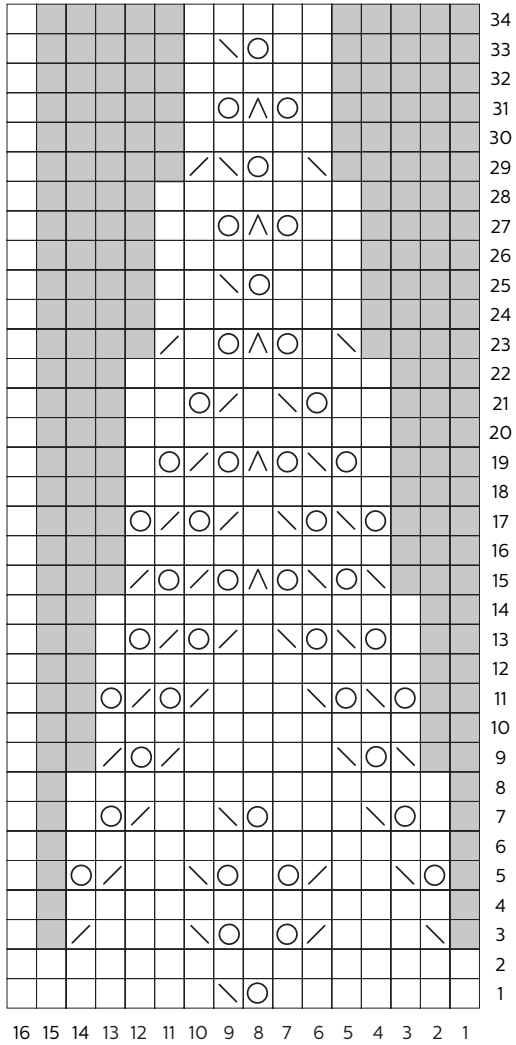


Key:

- | | |
|--|---|
|  knit |  sl1, K1, pssso |
|  yfwd |  K2tog |
|  no stitch |  sl1, K2tog, pssso |

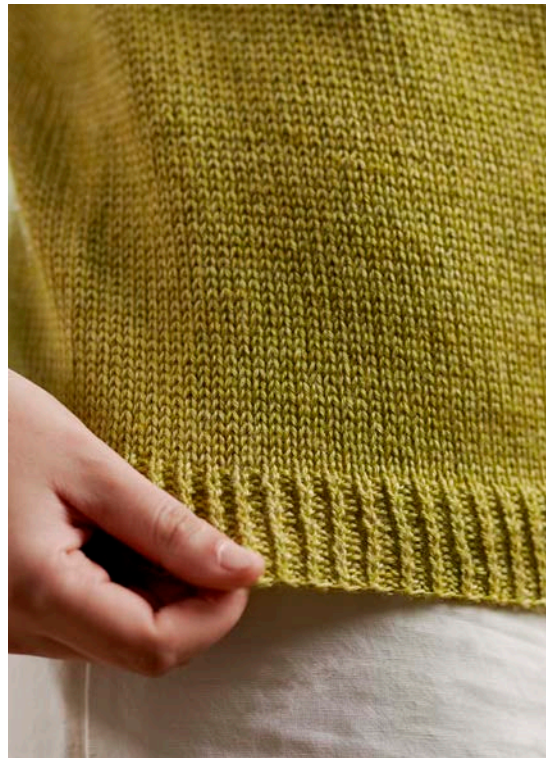
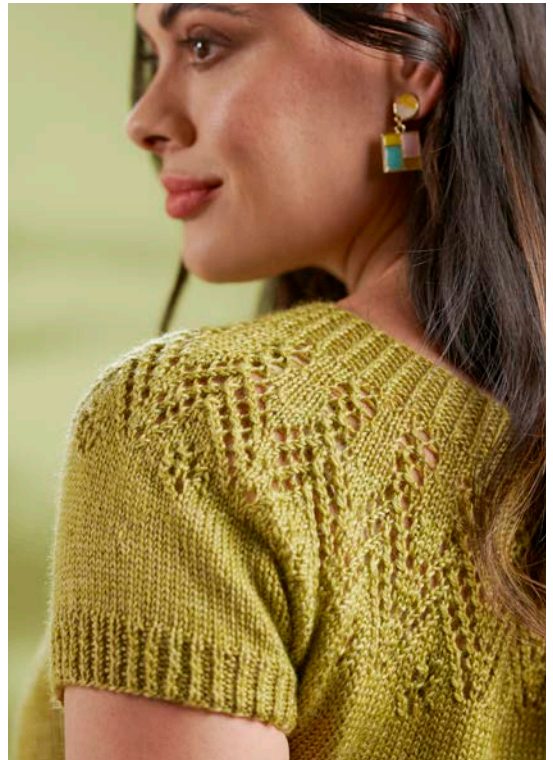
Yoke Top Chart

5th, 6th and 7th Sizes



Key:

	knit		sl1, K1, pss0
	yfwd		K2tog
	no stitch		sl1, K2tog, pss0



WEST YORKSHIRE SPINNERS

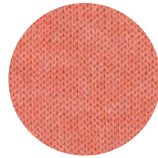
Elements

DK

A fresh and light colour palette inspired
by the joyful hues of summer.



Oyster Pearl
1098



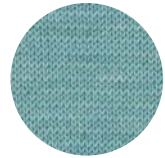
Living Coral
1103



Cherry Blossom
1105



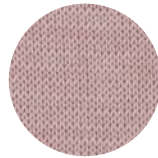
Palm Leaf
1104



Fresh Water
1106



Moonlight
1101



Seashell
1100



Golden Sands
1099



Summer Haze
1107



Cool Aloe
1102

WYS1000092 / DFP0016



TENCEL™ is a trademark
of Lenzing AG.

2 Airedale Park, Royd Ings Avenue, Keighley, West Yorkshire. BD21 4DG

01535 664500 sales@wyspinners.com wyspinners.com