




Anniversary

Lopi 32 – 26



Icelandic Wool
A sign of quality 



MATERIALS

Létt-Lopi - 50 g balls

Brown adult sweater

A	1420	murky	7	7	8	9
B	0051	white	2	2	3	3
C	0052	black sheep	1	2	2	2

Blue adult sweater

A	9418	stone blue	7	7	8	9
B	0005	black heather	2	2	3	3
C	0051	white	1	2	2	2

Grey child's sweater

A	0056	light grey	(6	7)
B	0005	black heather	(1	2)
C	0051	white	(2	2)

Green child's sweater

A	9421	celery green	(5	6)
B	0052	black sheep	(2	2)
C	9426	golden	(1	1)
D	9427	rust	(1	1)
E	1420	murky	(1	1)
F	9418	stone blue	(1	1)

Black adult sweater

A	0052	black sheep	7	7	8	9
B	0086	light beige	2	2	3	3
C	9418	stone blue	1	1	1	1
D	9421	celery green	1	1	1	1
E	9426	golden	1	1	1	1
F	9427	rust	1	1	1	1
G	9431	brick	1	1	1	1
H	9417	dark wine	1	1	1	1
I	1405	bottle green	1	1	1	1

Size 7 (4½mm) and size 4 (3½mm) circular needles 16" and 24-32"

Size 7 (4½mm) and size 4 (3½mm) dp ns

ADULT SIZES

CHILDREN'S SIZES

	(8-10	10-12)	S	M	L	XL
			years			
Chest:	(31½	35)	35	38½	42	45"
Men's:						
Length to underarm:			16	17	17½	18½"
Sleeve length to underarm:			19½	20	20½	21"
Women's:						
Length to underarm:			15	15½	16½	17"
Sleeve length to underarm:			18	18½	19	19½"
Children's:						
Length to underarm:	(13½	15)"				
Sleeve length to underarm:	(15	16½)"				

GAUGE

18 sts and 24 rows = 4" in St st using size 7 needles.

Check gauge and adjust needle size if necessary.

NOTE

Body and sleeves are worked in the round from lower edge to underarms, then joined to work yoke in the round. Round begins at left side of body. On yoke, round begins on the left side of back at the joining of body and sleeve. Children's sizes are in brackets.

BODY

Cast on (144, 160) 160, 176, 192, 208 sts using size 4 circular needle, children using color A, adult using B. Join in a circle and work *k1, p1* rib for 1½". Change to size 7 circular needle and work patt from **chart 1 (A, B or C)** in St st. When patt is complete cont with A until body measures, children: (13½, 15)", women: 15, 15½, 16½, 17", men: 16, 17, 17½, 18½" from cast on edge. Set aside and work sleeves.

SLEEVES

Cast on (36, 38) 40, 42, 44, 46 sts using size 4 dpns, children using color A, adult using B. Join in a circle and work *k1, p1* rib for 1½ in, inc (0, 2) 0, 2, 0, 2 sts in last rnd => (36, 40) 40, 44, 44, 48 sts. Change to size 7 dpns and work patt from **chart 1 (A, B, or C)** in St st (patt A stitch repeat is not complete in all sizes). When patt is finished cont with color A. Inc 1 st after first st and 1 st before last st of rnd, then children in every: (10th, 12th) rnd up sleeve, total (7) times => (50, 54) sts, women: 9th, 9th, 8th, 8th rnd, total 10, 10, 12, 12 times => 60, 64, 68, 72 sts, men: 7th, 7th, 6th, 6th rnd, total 14, 14, 16, 16 times => 68, 72, 76, 80 sts. Work until sleeve measures,

children: (13½, 15)", women: 18, 18½, 19, 19½", men: 19½, 20, 20½, 21" from cast on edge. Place (9, 11) 10, 12, 14, 16 sts underarm on st holder => children: (41, 43) sts, women: 50, 52, 54, 56 sts, men: 58, 60, 62, 64 sts. Work second sleeve.

YOKE

Join body and sleeves as follows: with size 7 circular needle using A, place the last (4, 5) 5, 6, 7, 8 sts and the first (5, 6) 5, 6, 7, 8 sts of body on st holder for underarm. K first sleeve. K (63, 69) 70, 76, 82, 88 sts for front, place next (9, 11) 10, 12, 14, 16 sts of body on st holder for underarm. K second sleeve. K (63, 69) 70, 76, 82, 88 sts for back => children: (208, 224) sts, women: 240, 256, 272, 288 sts, men: 256, 272, 288, 304 sts. Work patt and dec's from **chart 2 (A, B, C or D)** as indicated. Change to shorter circular needle when necessary. When chart is complete => children: (78, 84) sts, women: 90, 96, 102, 108 sts, men: 96, 102, 108, 114 sts.

NECKBAND

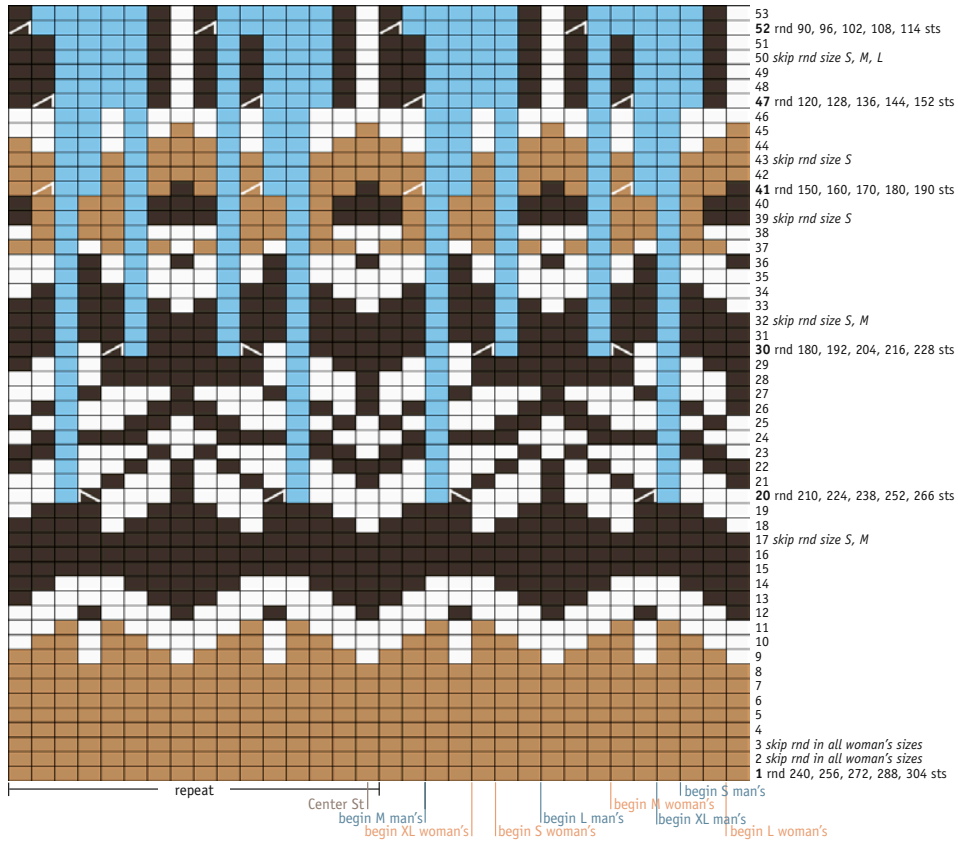
Change to size 4 needle, children using color A, adult using B. K 1 rnd and dec evenly spaced, children: (10, 12) sts => (68, 72) sts, women: 18, 22, 26, 30 sts => 72, 74, 76, 78 sts, men: 22, 26, 30, 34 sts => 74, 76, 78, 80 sts. Work *k1, p1* rib for 3". Bind off loosely.

FINISHING

Graft underarm sts tog and weave in loose ends. Fold neckband in half to inside and slip stitch in place. Rinse sweater by hand in lukewarm water and lay flat to dry in right measurements.

Design: **Védís Jónsdóttir**

CHART 2a



KEY BROWN/BLUE

- = A 1420 / 9418
- = B 0051 / 0005
- = C 0052 / 0051
- = k2tog
- = ssk
- = no st

CHART 1A

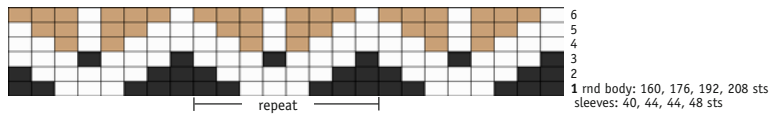
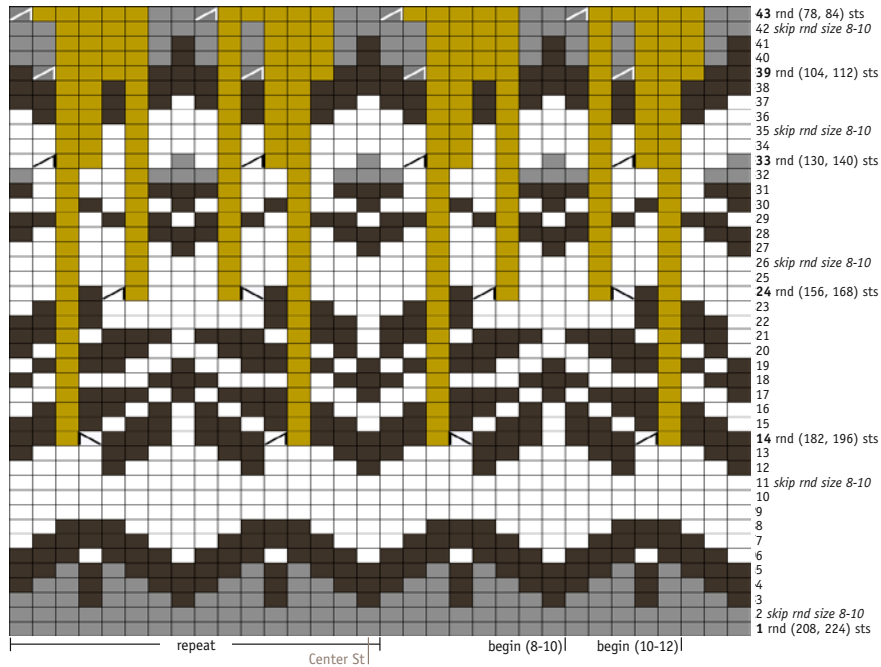


CHART 2B



KEY GREY

- = A 0056
- = B 0005
- = C 0051
- = k2tog
- = ssk
- = no st

CHART 1b

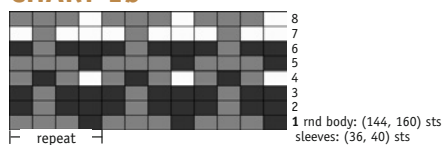
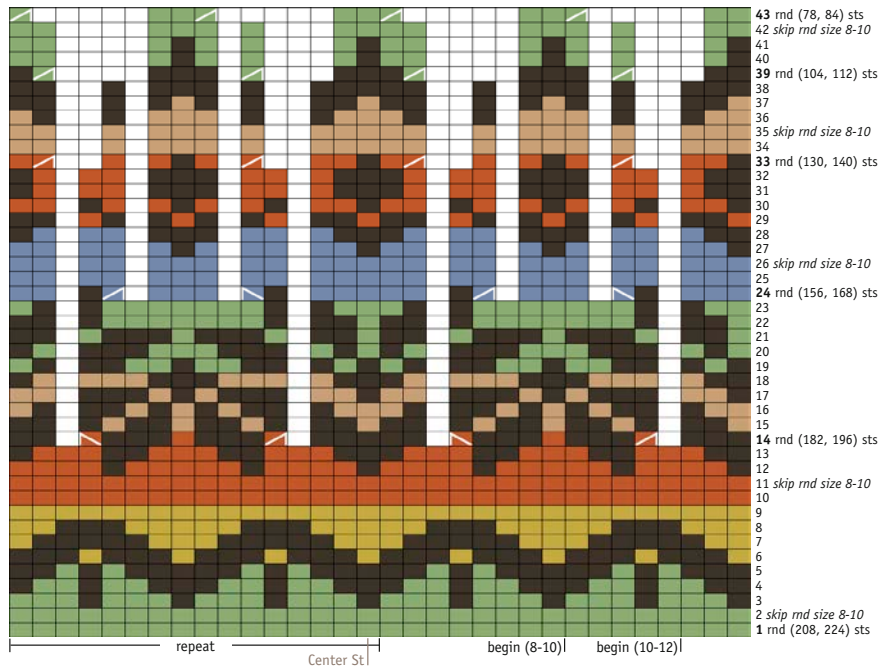


CHART 2C



KEY GREEN

- = A 9421
- = B 0052
- = C 9426
- = D 9418
- = E 1420
- = F 9427
- /
 = k2tog
- \
 = ssk
- = no st

CHART 1C

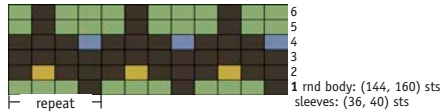
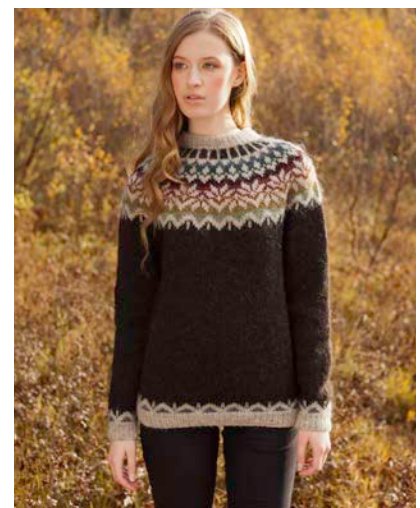
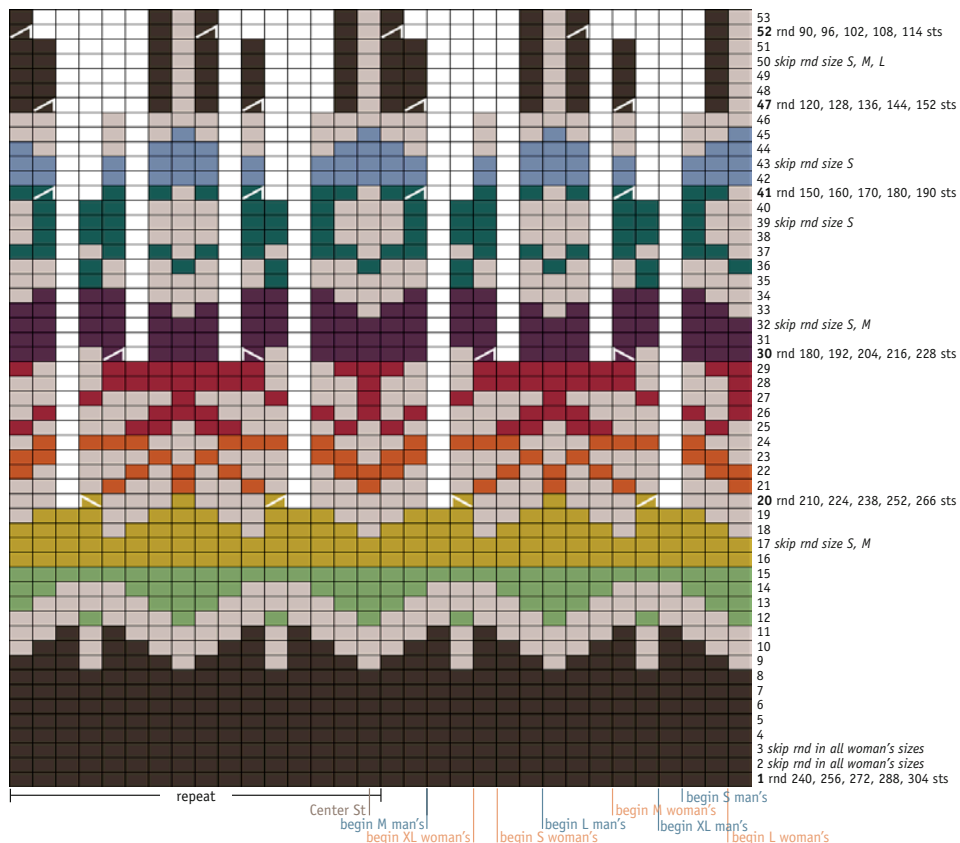


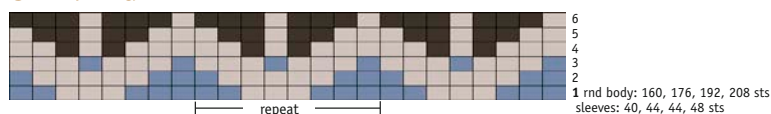
CHART 2D



KEY BLACK

- = A 0052
- = B 0086
- = C 9418
- = D 9421
- = E 9426
- = F 9427
- = G 9431
- = H 9417
- = I 1405
- /
 = k2tog
- \
 = ssk
- = no st

CHART 1a



ÍSTEX

Völuteigur 6, IS-270 Mosfellsbær, Iceland
Tel. +354 566 6300, www.istex.is, istex@istex.is