

WEST YORKSHIRE SPINNERS

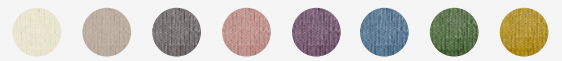


Pure
100% Falkland Islands Wool

Botanical Garden Colourwork Blanket

Designed by Rosee Woodland

Skill Level: ●●●○○

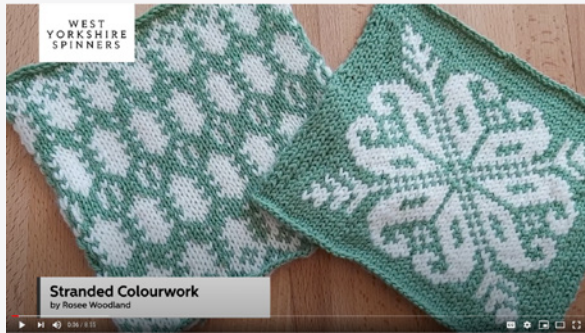


Resources

To help you with your Botanical Garden colourwork blanket, we've added some helpful video tutorials, covering the techniques you'll need, to our YouTube channel.

Click on the links below or search 'West Yorkshire Spinners' on YouTube to view:

Stranded Colourwork



Strandtarsia



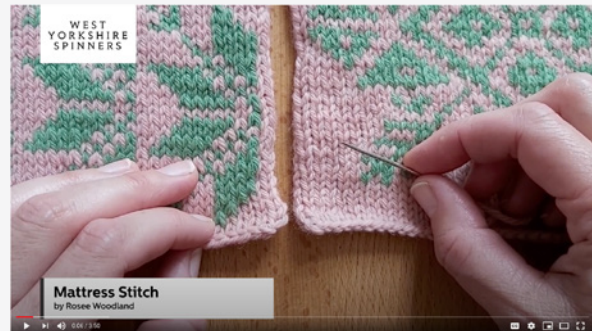
Weaving In Ends



Blocking



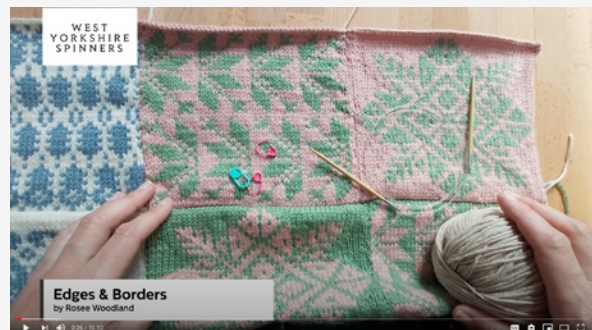
Mattress Stitch



False Grafting



Edges and Borders



WEST YORKSHIRE SPINNERS



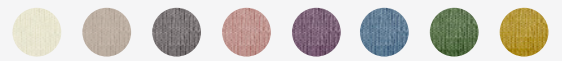
Pure
100% Falkland Islands Wool

Allotment

Botanical Garden Colourwork Blanket
Part One

Designed by Rosee Woodland

Skill Level: ●●●○○



Measurements

Size

One size

Blanket

85cm wide x 83cm tall after blocking

Panels

20cm wide x 19.5cm tall after blocking

Edging

2.5cm wide

Yarn – blanket panels



West Yorkshire Spinners Pure DK
Rosemary (381)
1 x 50g hank



West Yorkshire Spinners Pure DK
Blush (287)
1 x 50g hank



West Yorkshire Spinners Pure DK
Natural (010)
1 x 50g hank



West Yorkshire Spinners Pure DK
River (194)
1 x 50g hank



West Yorkshire Spinners Pure DK
Blackcurrant (319)
1 x 50g hank



West Yorkshire Spinners Pure DK
Sand (208)
1 x 50g hank



West Yorkshire Spinners Pure DK
Dandelion (446)
1 x 50g hank



West Yorkshire Spinners Pure DK
Mist (166)
1 x 50g hank

Yarn – blanket edging



West Yorkshire Spinners Pure DK
Sand (208)
1 x 50g hank

Materials

- Pair of 4mm (UK8/US6) knitting needles, for panels
- 3.25mm (UK10/US3) circular knitting needle, 120cm or 150cm long for edging
- Eight hinged stitch markers for edging
- One contrast colour stitch marker for edging
- Optional – one metre of cotton jersey and matching polyester sewing thread for backing

Stranded colourwork tension

26 sts and 26 rows to 10cm measured over stranded colourwork using 4mm needles before blocking

24 sts and 24 rows to 10cm measured over stranded colourwork using 4mm needles after blocking

Strandtarsia colourwork tension

26 sts and 27 rows to 10cm measured over strandtarsia colourwork using 4mm needles before blocking

24 sts and 24.5 rows to 10cm measured over strandtarsia colourwork using 4mm needles after blocking

Note: This pattern uses almost all the yarn specified. Treat the first panel in each technique as your tension swatch. Working to the tension given is very important otherwise more yarn will be needed.

Blocking is essential for this pattern.

Abbreviations

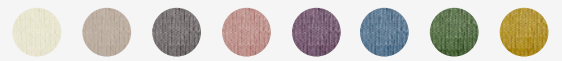
alt	alternate
cont	continue
fol	following
inc	increase
K	knit
Kfb	knit into the front and back of the st. 1 st increased
P	purl
Pfb	purl into the front and back of the st. 1 st increased
pm	place marker
rep	repeat
RS	right side
sm	slip marker
st(s)	stitch(es)
WS	wrong side

100% FALKLAND ISLANDS WOOL

DK	4mm US6	4mm USG6
Tension 10cm/4"sq	112 122	50g
	Metres Yards	Hank
28 rows 22sts		
Reshape whilst damp		

HAND WASH ONLY

100% WOOL/WOLLE/LANA/LAINE/YLLE/VILLA



Blanket panel

Using 4mm needles cast on 47 sts using the colour shown on the chart for Row 1 of your panel.

Note: If using the long tail cast on, count your cast-on row as Row 1 of the chart and start working on WS of work from Row 2.

Row 1 (RS): Knit to end, following colours shown on Row 1 of chart from right to left and using the colourwork method given for your panel (see below).

Row 2 (WS): Purl to end, following colours shown on Row 2 of chart from left to right using the colourwork method given for your panel (see below).

These 2 rows set pattern.

Cont in pattern as set, working each row of chart once until you have completed Row 47.

Cast off evenly to match the tension of the cast-on edge.

Weave in ends and block panel to measurements given.



Stranded colourwork technique panels (eight in total)

Make one of each in colourway A and colourway B.

- Allotment (week 1, part 1)
- Lavender (week 2, part 3)
- Verbena (week 3, part 5)
- Meadow (week 4, part 7)

When working using the stranded colourwork technique, strand the colour not in use across the wrong side of the work, taking care not to pull too tight or leave too loose.

Twist the colours together at the beginning of every row.

Always strand consistently, stranding the main colour yarn when not in use above the contrast colour yarn. This helps the contrast colour patterning stand out very slightly against the background.

Strandtarsia colourwork technique panels (eight in total)

Make 1 of each in colourway A and colourway B.

- Potager (week 1, part 2)
- Cornflower (week 2, part 4)
- Maze (week 3, part 6)
- Sunflower (week 4, part 8)

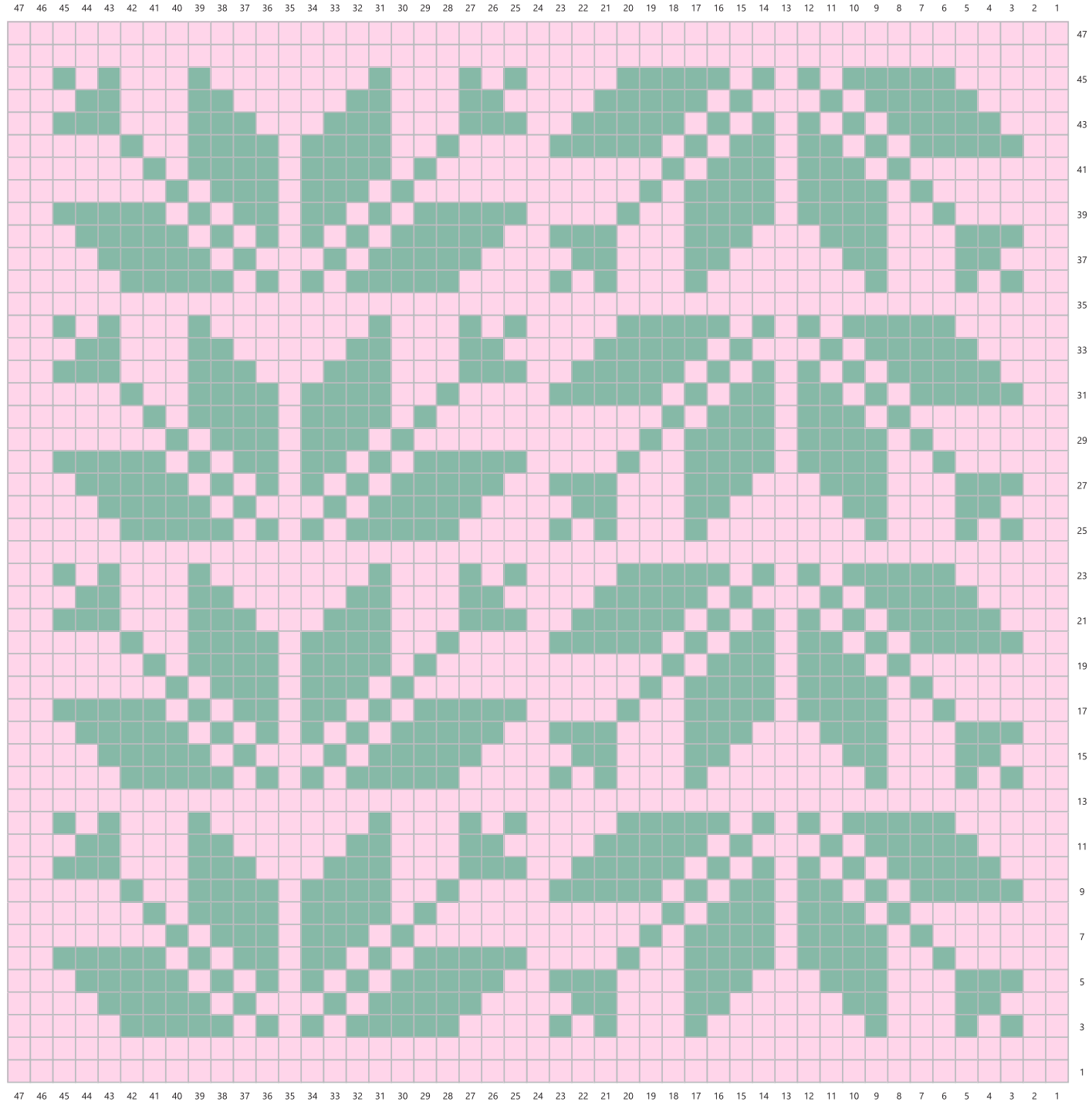
When working using the strandtarsia colourwork technique, work the edges around the central motif using the main colour yarn only. Work the central motif using the colour shown on the chart, stranding the colour not in use across the wrong side of the work, taking care not to pull too tight or leave too loose.

Do not twist the colours together where they meet, but instead, at the end of each row, 'anchor' the contrast colour yarn two sts away from where it will first be used on the next row (the outer edge of the central motif) by twisting it together with the main colour yarn at this point. This will allow you to strand it across the two sts to the first point it is used on the following row, keeping your tension consistent.





Always strand consistently, stranding the main colour yarn when not in use above the contrast colour yarn. This helps the contrast colour patterning stand out very slightly against the background.



Allotment – Chart A

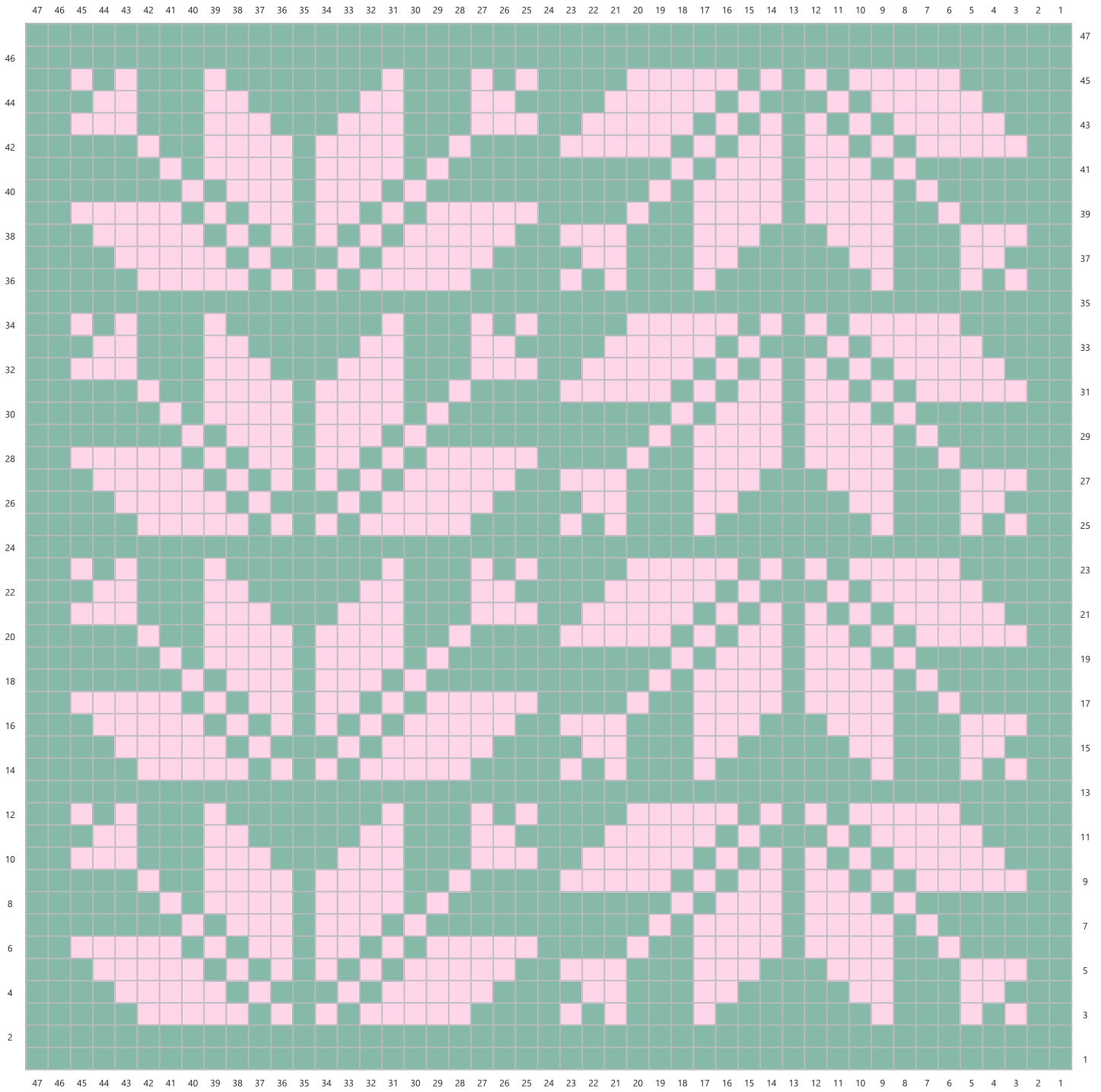


Key





-  Rosemary (381)
-  Blush (267)
-  RS: Knit
-  WS: Purl



Allotment – Chart B



Key

-  Rosemary (381)
-  Blush (267)
-  RS: Knit
-  WS: Purl

WEST YORKSHIRE SPINNERS



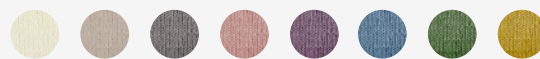
Pure
100% Falkland Islands Wool

Potager

Botanical Garden Colourwork Blanket
Part Two

Designed by Rosee Woodland

Skill Level: ●●●○○



Measurements

Size

One size

Blanket

85cm wide x 83cm tall after blocking

Panels

20cm wide x 19.5cm tall after blocking

Edging

2.5cm wide

Yarn – blanket panels



West Yorkshire Spinners Pure DK
Rosemary (381)
1 x 50g hank



West Yorkshire Spinners Pure DK
Blush (287)
1 x 50g hank



West Yorkshire Spinners Pure DK
Natural (010)
1 x 50g hank



West Yorkshire Spinners Pure DK
River (194)
1 x 50g hank



West Yorkshire Spinners Pure DK
Blackcurrant (319)
1 x 50g hank



West Yorkshire Spinners Pure DK
Sand (208)
1 x 50g hank



West Yorkshire Spinners Pure DK
Dandelion (446)
1 x 50g hank



West Yorkshire Spinners Pure DK
Mist (166)
1 x 50g hank

Yarn – blanket edging



West Yorkshire Spinners Pure DK
Sand (208)
1 x 50g hank

Materials

- Pair of 4mm (UK8/US6) knitting needles, for panels
- 3.25mm (UK10/US3) circular knitting needle, 120cm or 150cm long for edging
- Eight hinged stitch markers for edging
- One contrast colour stitch marker for edging
- Optional – one metre of cotton jersey and matching polyester sewing thread for backing

Stranded colourwork tension

26 sts and 26 rows to 10cm measured over stranded colourwork using 4mm needles before blocking

24 sts and 24 rows to 10cm measured over stranded colourwork using 4mm needles after blocking

Strandtarsia colourwork tension

26 sts and 27 rows to 10cm measured over strandtarsia colourwork using 4mm needles before blocking

24 sts and 24.5 rows to 10cm measured over strandtarsia colourwork using 4mm needles after blocking

Note: This pattern uses almost all the yarn specified. Treat the first panel in each technique as your tension swatch. Working to the tension given is very important otherwise more yarn will be needed.

Blocking is essential for this pattern.

Abbreviations

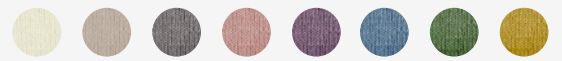
alt	alternate
cont	continue
fol	following
inc	increase
K	knit
Kfb	knit into the front and back of the st. 1 st increased
P	purl
Pfb	purl into the front and back of the st. 1 st increased
pm	place marker
rep	repeat
RS	right side
sm	slip marker
st(s)	stitch(es)
WS	wrong side

100% FALKLAND ISLANDS WOOL

DK	4mm US6	4mm USG6
Tension 10cm/4"sq	112 122	50g
	Metres Yards	Hank
28 rows 		
22sts	Reshape whilst damp	

HAND WASH ONLY

100% WOOL/WOLLE/LANA/LAINE/YLLE/VILLA



Blanket panel

Using 4mm needles cast on 47 sts using the colour shown on the chart for Row 1 of your panel.

Note: If using the long tail cast on, count your cast-on row as Row 1 of the chart and start working on WS of work from Row 2.

Row 1 (RS): Knit to end, following colours shown on Row 1 of chart from right to left and using the colourwork method given for your panel (see below).

Row 2 (WS): Purl to end, following colours shown on Row 2 of chart from left to right using the colourwork method given for your panel (see below).

These 2 rows set pattern.

Cont in pattern as set, working each row of chart once until you have completed Row 47.

Cast off evenly to match the tension of the cast-on edge.

Weave in ends and block panel to measurements given.



Stranded colourwork technique panels (eight in total)

Make one of each in colourway A and colourway B.

- Allotment (week 1, part 1)
- Lavender (week 2, part 3)
- Verbena (week 3, part 5)
- Meadow (week 4, part 7)

When working using the stranded colourwork technique, strand the colour not in use across the wrong side of the work, taking care not to pull too tight or leave too loose.

Twist the colours together at the beginning of every row.

Always strand consistently, stranding the main colour yarn when not in use above the contrast colour yarn. This helps the contrast colour patterning stand out very slightly against the background.

Strandtarsia colourwork technique panels (eight in total)

Make 1 of each in colourway A and colourway B.

- Potager (week 1, part 2)
- Cornflower (week 2, part 4)
- Maze (week 3, part 6)
- Sunflower (week 4, part 8)

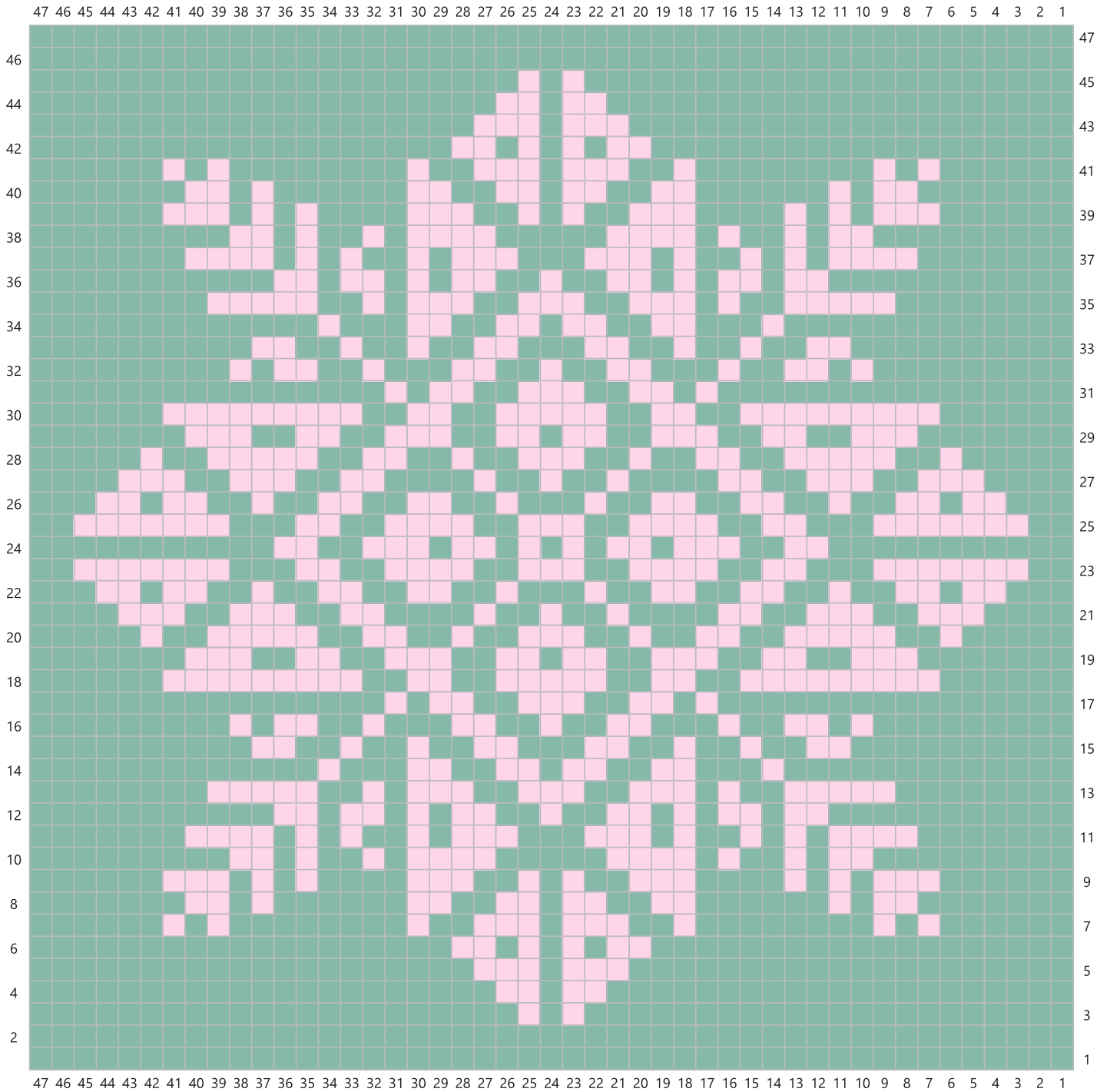
When working using the strandtarsia colourwork technique, work the edges around the central motif using the main colour yarn only. Work the central motif using the colour shown on the chart, stranding the colour not in use across the wrong side of the work, taking care not to pull too tight or leave too loose.

Do not twist the colours together where they meet, but instead, at the end of each row, 'anchor' the contrast colour yarn two sts away from where it will first be used on the next row (the outer edge of the central motif) by twisting it together with the main colour yarn at this point. This will allow you to strand it across the two sts to the first point it is used on the following row, keeping your tension consistent.





Always strand consistently, stranding the main colour yarn when not in use above the contrast colour yarn. This helps the contrast colour patterning stand out very slightly against the background.



Potager – Chart A

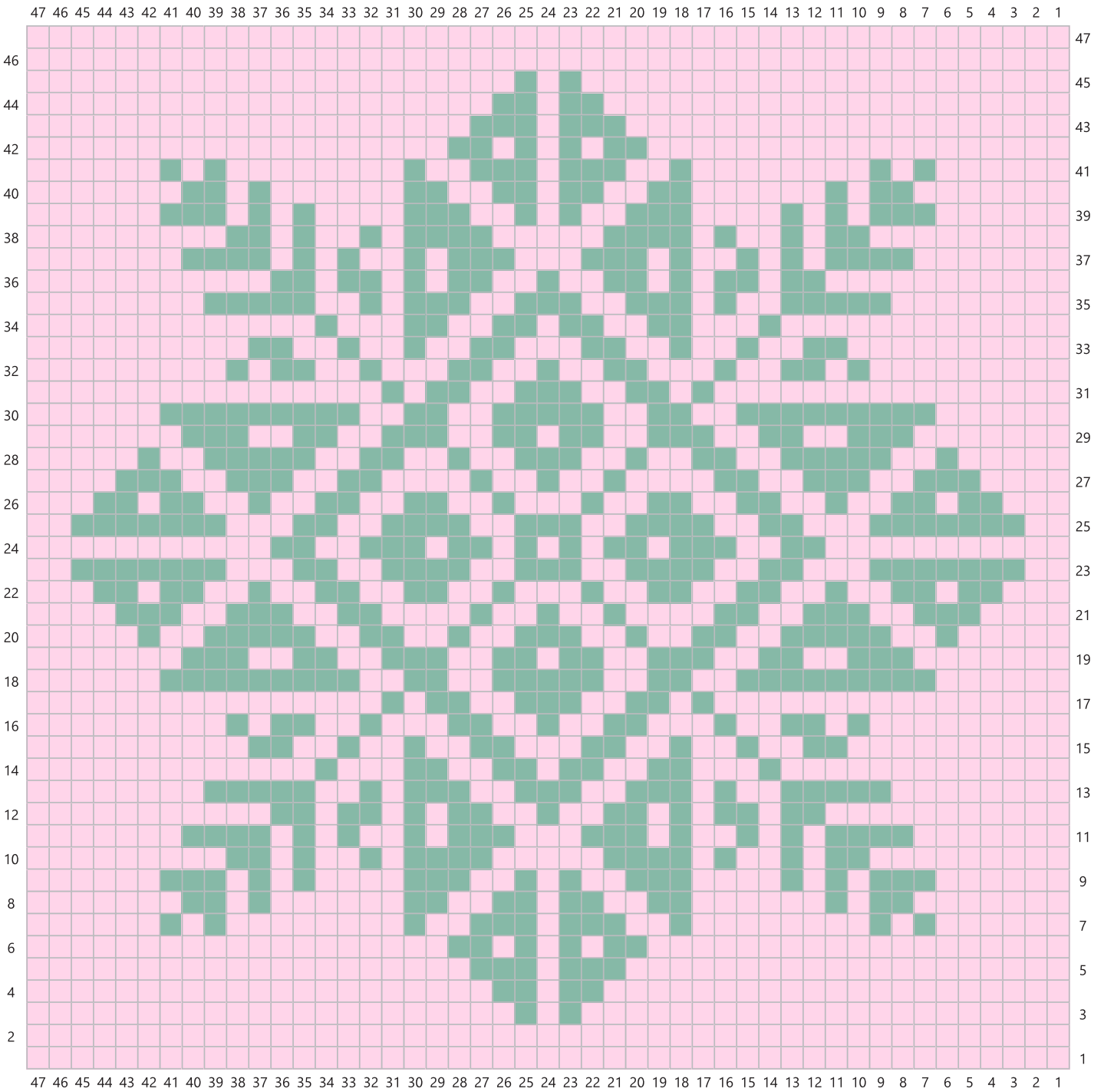


Key




-  Rosemary (381)
-  Blush (267)
-  RS: Knit
-  WS: Purl



Potager – Chart B



Key

-  Rosemary (381)
-  Blush (267)
-  RS: Knit
WS: Purl

WEST YORKSHIRE SPINNERS



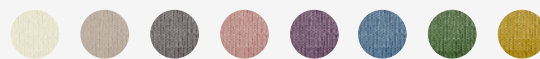
Lavender

Botanical Garden Colourwork Blanket
Part Three

Designed by Rosee Woodland

Pure
100% Falkland Islands Wool

Skill Level: ●●●○○



Measurements

Size

One size

Blanket

85cm wide x 83cm tall after blocking

Panels

20cm wide x 19.5cm tall after blocking

Edging

2.5cm wide

Yarn – blanket panels



West Yorkshire Spinners Pure DK
Rosemary (381)
1 x 50g hank



West Yorkshire Spinners Pure DK
Blush (287)
1 x 50g hank



West Yorkshire Spinners Pure DK
Natural (010)
1 x 50g hank



West Yorkshire Spinners Pure DK
River (194)
1 x 50g hank



West Yorkshire Spinners Pure DK
Blackcurrant (319)
1 x 50g hank



West Yorkshire Spinners Pure DK
Sand (208)
1 x 50g hank



West Yorkshire Spinners Pure DK
Dandelion (446)
1 x 50g hank



West Yorkshire Spinners Pure DK
Mist (166)
1 x 50g hank

Yarn – blanket edging



West Yorkshire Spinners Pure DK
Sand (208)
1 x 50g hank

Materials

- Pair of 4mm (UK8/US6) knitting needles, for panels
- 3.25mm (UK10/US3) circular knitting needle, 120cm or 150cm long for edging
- Eight hinged stitch markers for edging
- One contrast colour stitch marker for edging
- Optional – one metre of cotton jersey and matching polyester sewing thread for backing

Stranded colourwork tension

26 sts and 26 rows to 10cm measured over stranded colourwork using 4mm needles before blocking

24 sts and 24 rows to 10cm measured over stranded colourwork using 4mm needles after blocking

Strandtarsia colourwork tension

26 sts and 27 rows to 10cm measured over strandtarsia colourwork using 4mm needles before blocking

24 sts and 24.5 rows to 10cm measured over strandtarsia colourwork using 4mm needles after blocking

Note: This pattern uses almost all the yarn specified. Treat the first panel in each technique as your tension swatch. Working to the tension given is very important otherwise more yarn will be needed.

Blocking is essential for this pattern.

Abbreviations

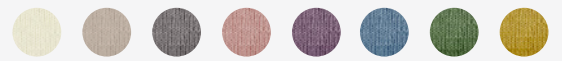
alt	alternate
cont	continue
fol	following
inc	increase
K	knit
Kfb	knit into the front and back of the st. 1 st increased
P	purl
Pfb	purl into the front and back of the st. 1 st increased
pm	place marker
rep	repeat
RS	right side
sm	slip marker
st(s)	stitch(es)
WS	wrong side

100% FALKLAND ISLANDS WOOL

DK	4mm US6	4mm USG6
Tension 10cm/4"sq	112 122	50g
	Metres Yards	Hank
28 rows 		
22sts	Reshape whilst damp	

HAND WASH ONLY

100% WOOL/WOLLE/LANA/LAINE/YLLE/VILLA



Blanket panel

Using 4mm needles cast on 47 sts using the colour shown on the chart for Row 1 of your panel.

Note: If using the long tail cast on, count your cast-on row as Row 1 of the chart and start working on WS of work from Row 2.

Row 1 (RS): Knit to end, following colours shown on Row 1 of chart from right to left and using the colourwork method given for your panel (see below).

Row 2 (WS): Purl to end, following colours shown on Row 2 of chart from left to right using the colourwork method given for your panel (see below).

These 2 rows set pattern.

Cont in pattern as set, working each row of chart once until you have completed Row 47.

Cast off evenly to match the tension of the cast-on edge.

Weave in ends and block panel to measurements given.



Stranded colourwork technique panels (eight in total)

Make one of each in colourway A and colourway B.

- Allotment (week 1, part 1)
- Lavender (week 2, part 3)
- Verbena (week 3, part 5)
- Meadow (week 4, part 7)

When working using the stranded colourwork technique, strand the colour not in use across the wrong side of the work, taking care not to pull too tight or leave too loose.

Twist the colours together at the beginning of every row.

Always strand consistently, stranding the main colour yarn when not in use above the contrast colour yarn. This helps the contrast colour patterning stand out very slightly against the background.

Strandtarsia colourwork technique panels (eight in total)

Make 1 of each in colourway A and colourway B.

- Potager (week 1, part 2)
- Cornflower (week 2, part 4)
- Maze (week 3, part 6)
- Sunflower (week 4, part 8)

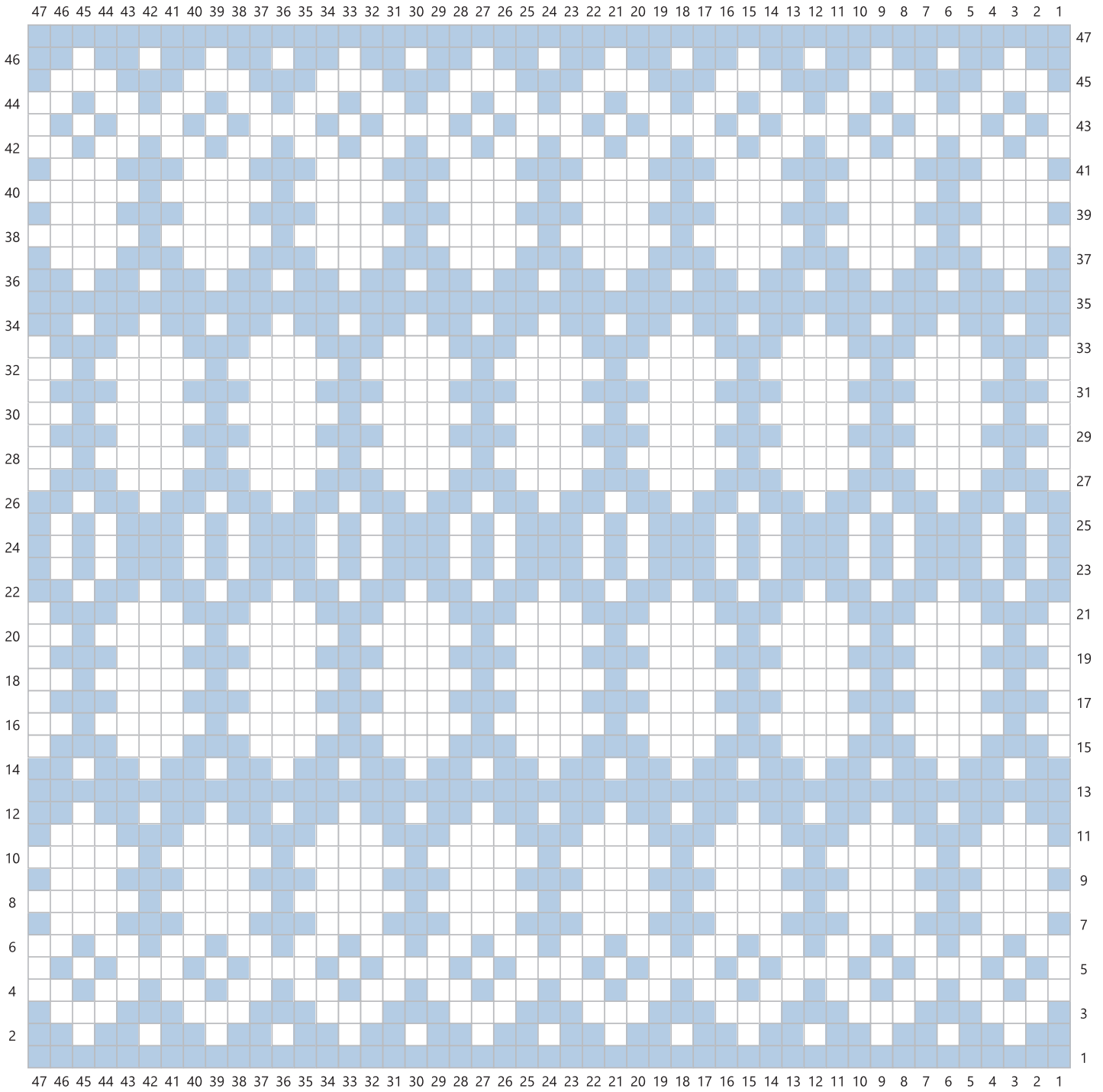
When working using the strandtarsia colourwork technique, work the edges around the central motif using the main colour yarn only. Work the central motif using the colour shown on the chart, stranding the colour not in use across the wrong side of the work, taking care not to pull too tight or leave too loose.

Do not twist the colours together where they meet, but instead, at the end of each row, 'anchor' the contrast colour yarn two sts away from where it will first be used on the next row (the outer edge of the central motif) by twisting it together with the main colour yarn at this point. This will allow you to strand it across the two sts to the first point it is used on the following row, keeping your tension consistent.

Always strand consistently, stranding the main colour yarn when not in use above the contrast colour yarn. This helps the contrast colour patterning stand out very slightly against the background.



Lavender – Chart A

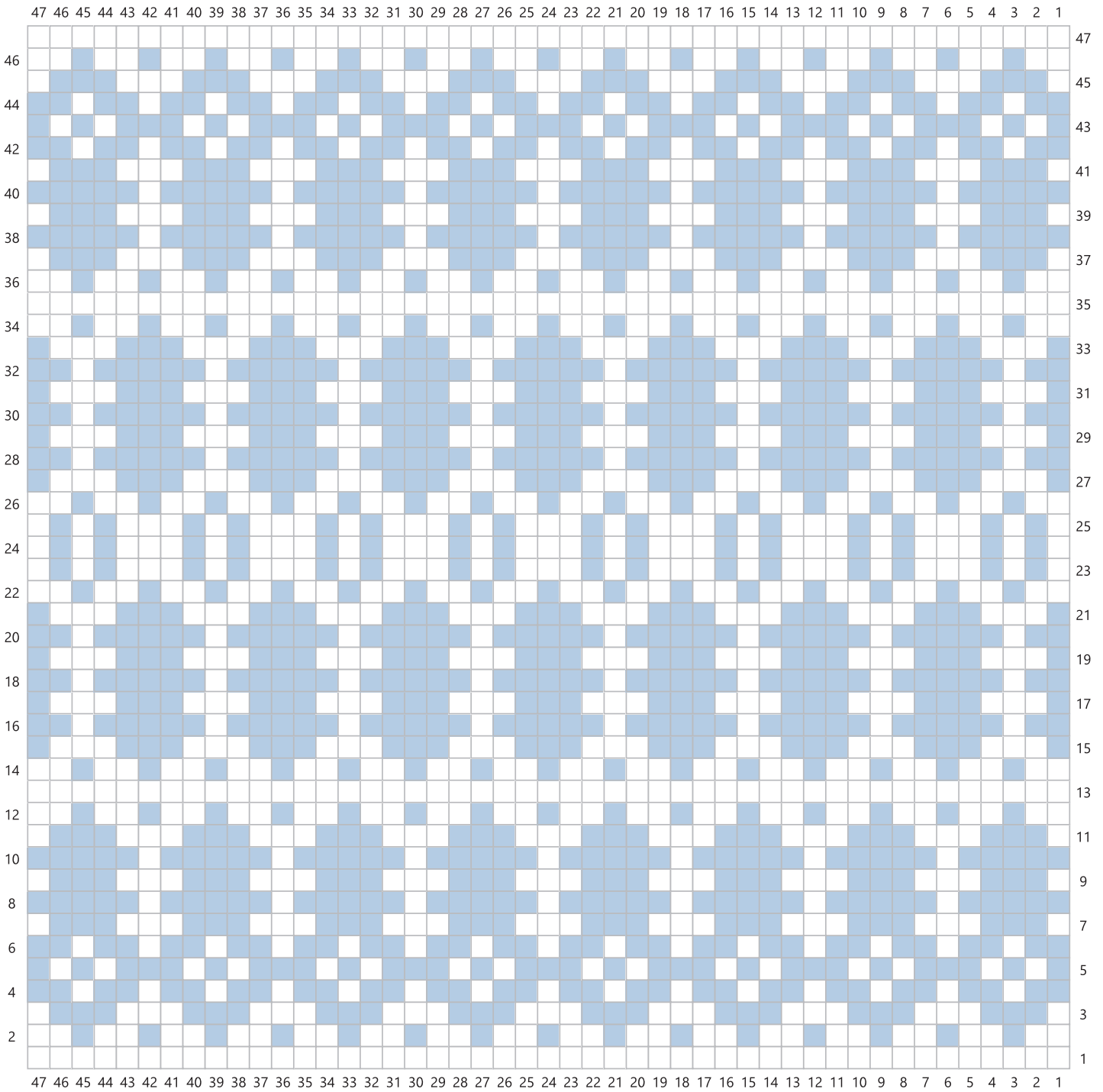


Key

- Natural (010)
- River (194)
- RS: Knit
- WS: Purl



Lavender – Chart B



- Key**
- Natural (010)
 - River (194)
 - RS: Knit
 - WS: Purl

WEST YORKSHIRE SPINNERS



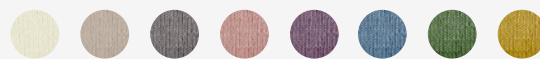
Cornflower

Botanical Garden Colourwork Blanket
Part Four

Designed by Rosee Woodland

Pure
100% Falkland Islands Wool

Skill Level: ●●●○○



Measurements

Size

One size

Blanket

85cm wide x 83cm tall after blocking

Panels

20cm wide x 19.5cm tall after blocking

Edging

2.5cm wide

Yarn – blanket panels



West Yorkshire Spinners Pure DK
Rosemary (381)
1 x 50g hank



West Yorkshire Spinners Pure DK
Blush (287)
1 x 50g hank



West Yorkshire Spinners Pure DK
Natural (010)
1 x 50g hank



West Yorkshire Spinners Pure DK
River (194)
1 x 50g hank



West Yorkshire Spinners Pure DK
Blackcurrant (319)
1 x 50g hank



West Yorkshire Spinners Pure DK
Sand (208)
1 x 50g hank



West Yorkshire Spinners Pure DK
Dandelion (446)
1 x 50g hank



West Yorkshire Spinners Pure DK
Mist (166)
1 x 50g hank

Yarn – blanket edging



West Yorkshire Spinners Pure DK
Sand (208)
1 x 50g hank

Materials

- Pair of 4mm (UK8/US6) knitting needles, for panels
- 3.25mm (UK10/US3) circular knitting needle, 120cm or 150cm long for edging
- Eight hinged stitch markers for edging
- One contrast colour stitch marker for edging
- Optional – one metre of cotton jersey and matching polyester sewing thread for backing

Stranded colourwork tension

26 sts and 26 rows to 10cm measured over stranded colourwork using 4mm needles before blocking

24 sts and 24 rows to 10cm measured over stranded colourwork using 4mm needles after blocking

Strandtarsia colourwork tension

26 sts and 27 rows to 10cm measured over strandtarsia colourwork using 4mm needles before blocking

24 sts and 24.5 rows to 10cm measured over strandtarsia colourwork using 4mm needles after blocking

Note: This pattern uses almost all the yarn specified. Treat the first panel in each technique as your tension swatch. Working to the tension given is very important otherwise more yarn will be needed.

Blocking is essential for this pattern.

Abbreviations

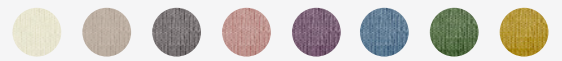
alt	alternate
cont	continue
fol	following
inc	increase
K	knit
Kfb	knit into the front and back of the st. 1 st increased
P	purl
Pfb	purl into the front and back of the st. 1 st increased
pm	place marker
rep	repeat
RS	right side
sm	slip marker
st(s)	stitch(es)
WS	wrong side

100% FALKLAND ISLANDS WOOL

DK	4mm US6	4mm USG6
Tension 10cm/4"sq	112 122	50g
	Metres Yards	Hank
28 rows 	Reshape whilst damp	
22sts		

HAND WASH ONLY

100% WOOL/WOLLE/LANA/LAINE/YLLE/VILLA



Blanket panel

Using 4mm needles cast on 47 sts using the colour shown on the chart for Row 1 of your panel.

Note: If using the long tail cast on, count your cast-on row as Row 1 of the chart and start working on WS of work from Row 2.

Row 1 (RS): Knit to end, following colours shown on Row 1 of chart from right to left and using the colourwork method given for your panel (see below).

Row 2 (WS): Purl to end, following colours shown on Row 2 of chart from left to right using the colourwork method given for your panel (see below).

These 2 rows set pattern.

Cont in pattern as set, working each row of chart once until you have completed Row 47.

Cast off evenly to match the tension of the cast-on edge.

Weave in ends and block panel to measurements given.



Stranded colourwork technique panels (eight in total)

Make one of each in colourway A and colourway B.

- Allotment (week 1, part 1)
- Lavender (week 2, part 3)
- Verbena (week 3, part 5)
- Meadow (week 4, part 7)

When working using the stranded colourwork technique, strand the colour not in use across the wrong side of the work, taking care not to pull too tight or leave too loose.

Twist the colours together at the beginning of every row.

Always strand consistently, stranding the main colour yarn when not in use above the contrast colour yarn. This helps the contrast colour patterning stand out very slightly against the background.

Strandtarsia colourwork technique panels (eight in total)

Make 1 of each in colourway A and colourway B.

- Potager (week 1, part 2)
- Cornflower (week 2, part 4)
- Maze (week 3, part 6)
- Sunflower (week 4, part 8)

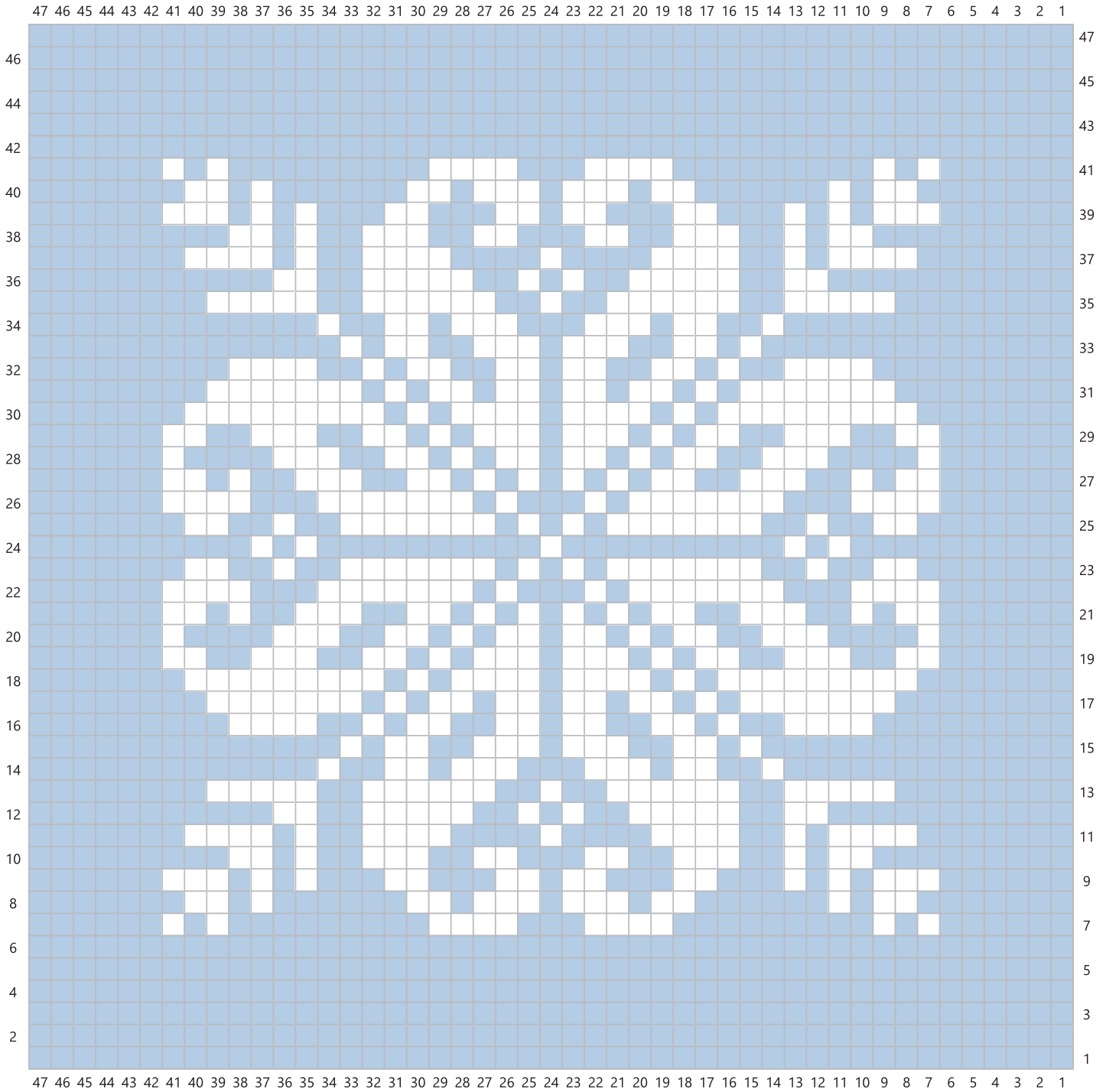
When working using the strandtarsia colourwork technique, work the edges around the central motif using the main colour yarn only. Work the central motif using the colour shown on the chart, stranding the colour not in use across the wrong side of the work, taking care not to pull too tight or leave too loose.

Do not twist the colours together where they meet, but instead, at the end of each row, ‘anchor’ the contrast colour yarn two sts away from where it will first be used on the next row (the outer edge of the central motif) by twisting it together with the main colour yarn at this point. This will allow you to strand it across the two sts to the first point it is used on the following row, keeping your tension consistent.

Always strand consistently, stranding the main colour yarn when not in use above the contrast colour yarn. This helps the contrast colour patterning stand out very slightly against the background.



Cornflower – Chart A

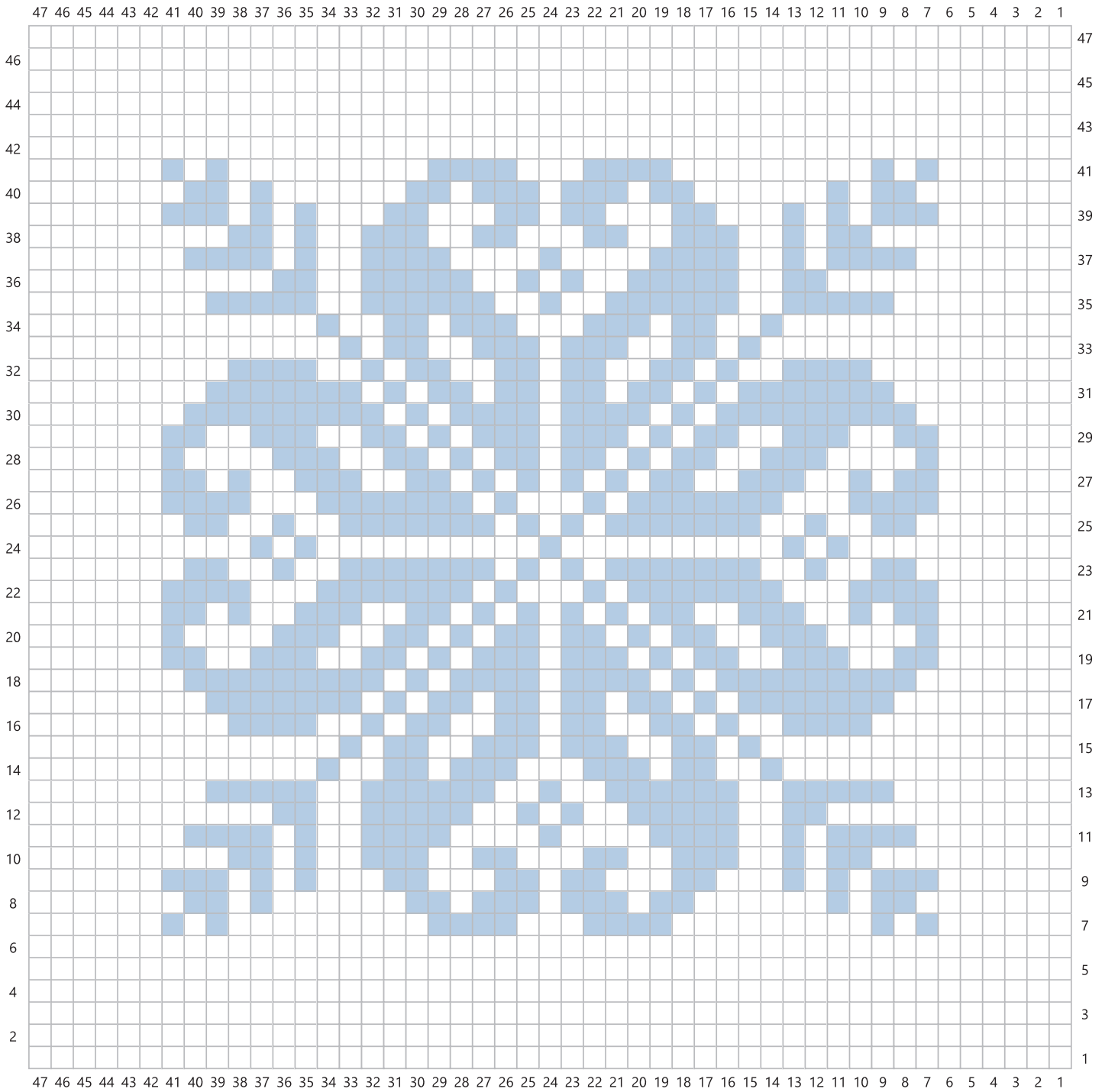


Key

- Natural (010)
- River (194)
- RS: Knit
- WS: Purl



Cornflower – Chart B



- Key**
- Natural (O10)
 - River (194)
 - RS: Knit
 - WS: Purl

WEST YORKSHIRE SPINNERS



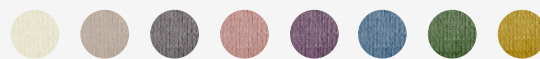
Verbena

Botanical Garden Colourwork Blanket
Part Five

Designed by Rosee Woodland

Pure
100% Falkland Islands Wool

Skill Level: ●●●○○



Measurements

Size

One size

Blanket

85cm wide x 83cm tall after blocking

Panels

20cm wide x 19.5cm tall after blocking

Edging

2.5cm wide

Yarn – blanket panels



West Yorkshire Spinners Pure DK
Rosemary (381)
1 x 50g hank



West Yorkshire Spinners Pure DK
Blush (287)
1 x 50g hank



West Yorkshire Spinners Pure DK
Natural (010)
1 x 50g hank



West Yorkshire Spinners Pure DK
River (194)
1 x 50g hank



West Yorkshire Spinners Pure DK
Blackcurrant (319)
1 x 50g hank



West Yorkshire Spinners Pure DK
Sand (208)
1 x 50g hank



West Yorkshire Spinners Pure DK
Dandelion (446)
1 x 50g hank



West Yorkshire Spinners Pure DK
Mist (166)
1 x 50g hank

Yarn – blanket edging



West Yorkshire Spinners Pure DK
Sand (208)
1 x 50g hank

Materials

- Pair of 4mm (UK8/US6) knitting needles, for panels
- 3.25mm (UK10/US3) circular knitting needle, 120cm or 150cm long for edging
- Eight hinged stitch markers for edging
- One contrast colour stitch marker for edging
- Optional – one metre of cotton jersey and matching polyester sewing thread for backing

Stranded colourwork tension

26 sts and 26 rows to 10cm measured over stranded colourwork using 4mm needles before blocking

24 sts and 24 rows to 10cm measured over stranded colourwork using 4mm needles after blocking

Strandtarsia colourwork tension

26 sts and 27 rows to 10cm measured over strandtarsia colourwork using 4mm needles before blocking

24 sts and 24.5 rows to 10cm measured over strandtarsia colourwork using 4mm needles after blocking

Note: This pattern uses almost all the yarn specified. Treat the first panel in each technique as your tension swatch. Working to the tension given is very important otherwise more yarn will be needed.

Blocking is essential for this pattern.

Abbreviations

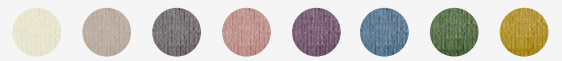
alt	alternate
cont	continue
fol	following
inc	increase
K	knit
Kfb	knit into the front and back of the st. 1 st increased
P	purl
Pfb	purl into the front and back of the st. 1 st increased
pm	place marker
rep	repeat
RS	right side
sm	slip marker
st(s)	stitch(es)
WS	wrong side

100% FALKLAND ISLANDS WOOL

DK	4mm US6	4mm USG6
Tension 10cm/4"sq	112 122	50g
	Metres Yards	Hank
28 rows 22sts		
Reshape whilst damp		

HAND WASH ONLY

100% WOOL/WOLLE/LANA/LAINE/YLLE/VILLA



Blanket panel

Using 4mm needles cast on 47 sts using the colour shown on the chart for Row 1 of your panel.

Note: If using the long tail cast on, count your cast-on row as Row 1 of the chart and start working on WS of work from Row 2.

Row 1 (RS): Knit to end, following colours shown on Row 1 of chart from right to left and using the colourwork method given for your panel (see below).

Row 2 (WS): Purl to end, following colours shown on Row 2 of chart from left to right using the colourwork method given for your panel (see below).

These 2 rows set pattern.

Cont in pattern as set, working each row of chart once until you have completed Row 47.

Cast off evenly to match the tension of the cast-on edge.

Weave in ends and block panel to measurements given.



Stranded colourwork technique panels (eight in total)

Make one of each in colourway A and colourway B.

- Allotment (week 1, part 1)
- Lavender (week 2, part 3)
- Verbena (week 3, part 5)
- Meadow (week 4, part 7)

When working using the stranded colourwork technique, strand the colour not in use across the wrong side of the work, taking care not to pull too tight or leave too loose.

Twist the colours together at the beginning of every row.

Always strand consistently, stranding the main colour yarn when not in use above the contrast colour yarn. This helps the contrast colour patterning stand out very slightly against the background.

Strandtarsia colourwork technique panels (eight in total)

Make 1 of each in colourway A and colourway B.

- Potager (week 1, part 2)
- Cornflower (week 2, part 4)
- Maze (week 3, part 6)
- Sunflower (week 4, part 8)

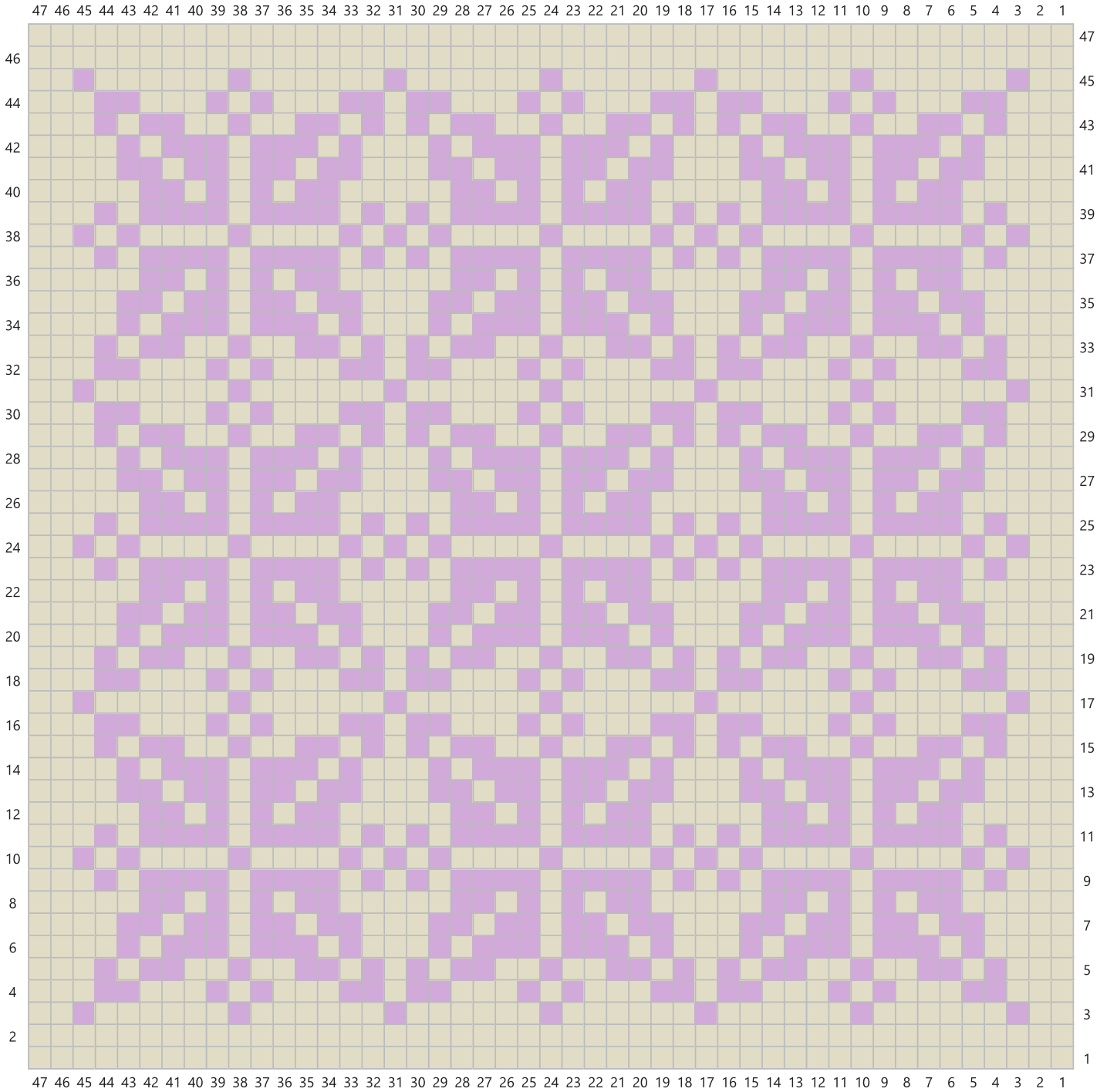
When working using the strandtarsia colourwork technique, work the edges around the central motif using the main colour yarn only. Work the central motif using the colour shown on the chart, stranding the colour not in use across the wrong side of the work, taking care not to pull too tight or leave too loose.

Do not twist the colours together where they meet, but instead, at the end of each row, 'anchor' the contrast colour yarn two sts away from where it will first be used on the next row (the outer edge of the central motif) by twisting it together with the main colour yarn at this point. This will allow you to strand it across the two sts to the first point it is used on the following row, keeping your tension consistent.

Always strand consistently, stranding the main colour yarn when not in use above the contrast colour yarn. This helps the contrast colour patterning stand out very slightly against the background.



Verbena – Chart A

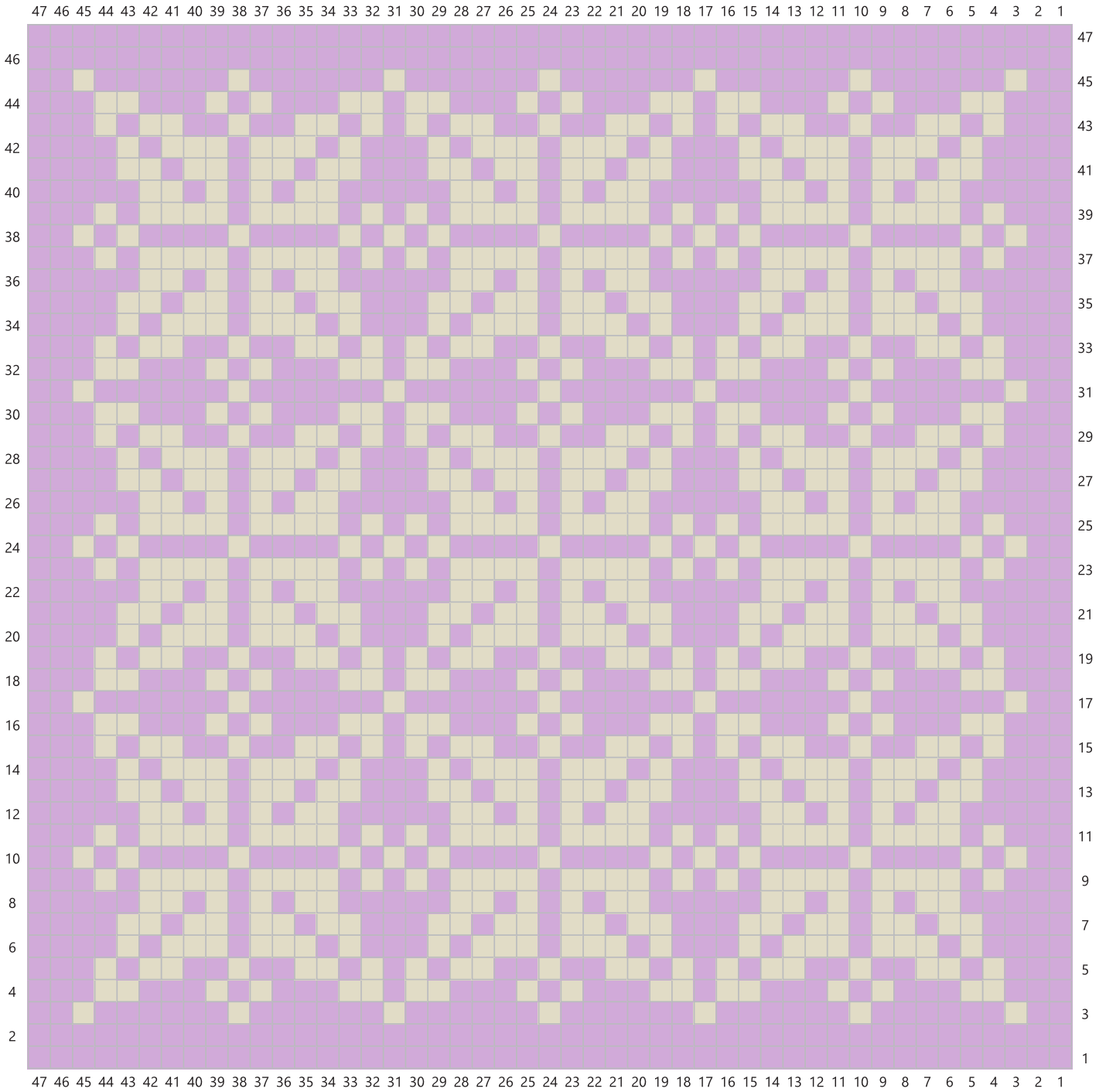


Key

- Blackcurrant (319)
- Sand (208)
- RS: Knit
- WS: Purl



Verbena – Chart B



- Key**
- Blackcurrant (319)
 - Sand (208)
 - RS: Knit
 - WS: Purl

WEST YORKSHIRE SPINNERS



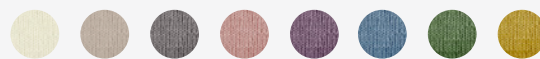
Maze

Botanical Garden Colourwork Blanket
Part Six

Designed by Rosee Woodland

Pure
100% Falkland Islands Wool

Skill Level: ●●●○○



Measurements

Size

One size

Blanket

85cm wide x 83cm tall after blocking

Panels

20cm wide x 19.5cm tall after blocking

Edging

2.5cm wide

Yarn – blanket panels



West Yorkshire Spinners Pure DK
Rosemary (381)
1 x 50g hank



West Yorkshire Spinners Pure DK
Blush (287)
1 x 50g hank



West Yorkshire Spinners Pure DK
Natural (010)
1 x 50g hank



West Yorkshire Spinners Pure DK
River (194)
1 x 50g hank



West Yorkshire Spinners Pure DK
Blackcurrant (319)
1 x 50g hank



West Yorkshire Spinners Pure DK
Sand (208)
1 x 50g hank



West Yorkshire Spinners Pure DK
Dandelion (446)
1 x 50g hank



West Yorkshire Spinners Pure DK
Mist (166)
1 x 50g hank

Yarn – blanket edging



West Yorkshire Spinners Pure DK
Sand (208)
1 x 50g hank

Materials

- Pair of 4mm (UK8/US6) knitting needles, for panels
- 3.25mm (UK10/US3) circular knitting needle, 120cm or 150cm long for edging
- Eight hinged stitch markers for edging
- One contrast colour stitch marker for edging
- Optional – one metre of cotton jersey and matching polyester sewing thread for backing

Stranded colourwork tension

26 sts and 26 rows to 10cm measured over stranded colourwork using 4mm needles before blocking

24 sts and 24 rows to 10cm measured over stranded colourwork using 4mm needles after blocking

Strandtarsia colourwork tension

26 sts and 27 rows to 10cm measured over strandtarsia colourwork using 4mm needles before blocking

24 sts and 24.5 rows to 10cm measured over strandtarsia colourwork using 4mm needles after blocking

Note: This pattern uses almost all the yarn specified. Treat the first panel in each technique as your tension swatch. Working to the tension given is very important otherwise more yarn will be needed.

Blocking is essential for this pattern.

Abbreviations

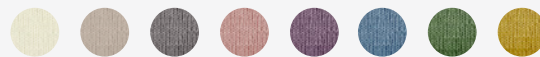
alt	alternate
cont	continue
fol	following
inc	increase
K	knit
Kfb	knit into the front and back of the st. 1 st increased
P	purl
Pfb	purl into the front and back of the st. 1 st increased
pm	place marker
rep	repeat
RS	right side
sm	slip marker
st(s)	stitch(es)
WS	wrong side

100% FALKLAND ISLANDS WOOL

DK	4mm US6	4mm USG6
Tension 10cm/4"sq	112 122	50g
	Metres Yards	Hank
28 rows 		
22sts	Reshape whilst damp	

HAND WASH ONLY

100% WOOL/WOLLE/LANA/LAINE/YLLE/VILLA



Blanket panel

Using 4mm needles cast on 47 sts using the colour shown on the chart for Row 1 of your panel.

Note: If using the long tail cast on, count your cast-on row as Row 1 of the chart and start working on WS of work from Row 2.

Row 1 (RS): Knit to end, following colours shown on Row 1 of chart from right to left and using the colourwork method given for your panel (see below).

Row 2 (WS): Purl to end, following colours shown on Row 2 of chart from left to right using the colourwork method given for your panel (see below).

These 2 rows set pattern.

Cont in pattern as set, working each row of chart once until you have completed Row 47.

Cast off evenly to match the tension of the cast-on edge.

Weave in ends and block panel to measurements given.



Stranded colourwork technique panels (eight in total)

Make one of each in colourway A and colourway B.

- Allotment (week 1, part 1)
- Lavender (week 2, part 3)
- Verbena (week 3, part 5)
- Meadow (week 4, part 7)

When working using the stranded colourwork technique, strand the colour not in use across the wrong side of the work, taking care not to pull too tight or leave too loose.

Twist the colours together at the beginning of every row.

Always strand consistently, stranding the main colour yarn when not in use above the contrast colour yarn. This helps the contrast colour patterning stand out very slightly against the background.

Strandtarsia colourwork technique panels (eight in total)

Make 1 of each in colourway A and colourway B.

- Potager (week 1, part 2)
- Cornflower (week 2, part 4)
- Maze (week 3, part 6)
- Sunflower (week 4, part 8)

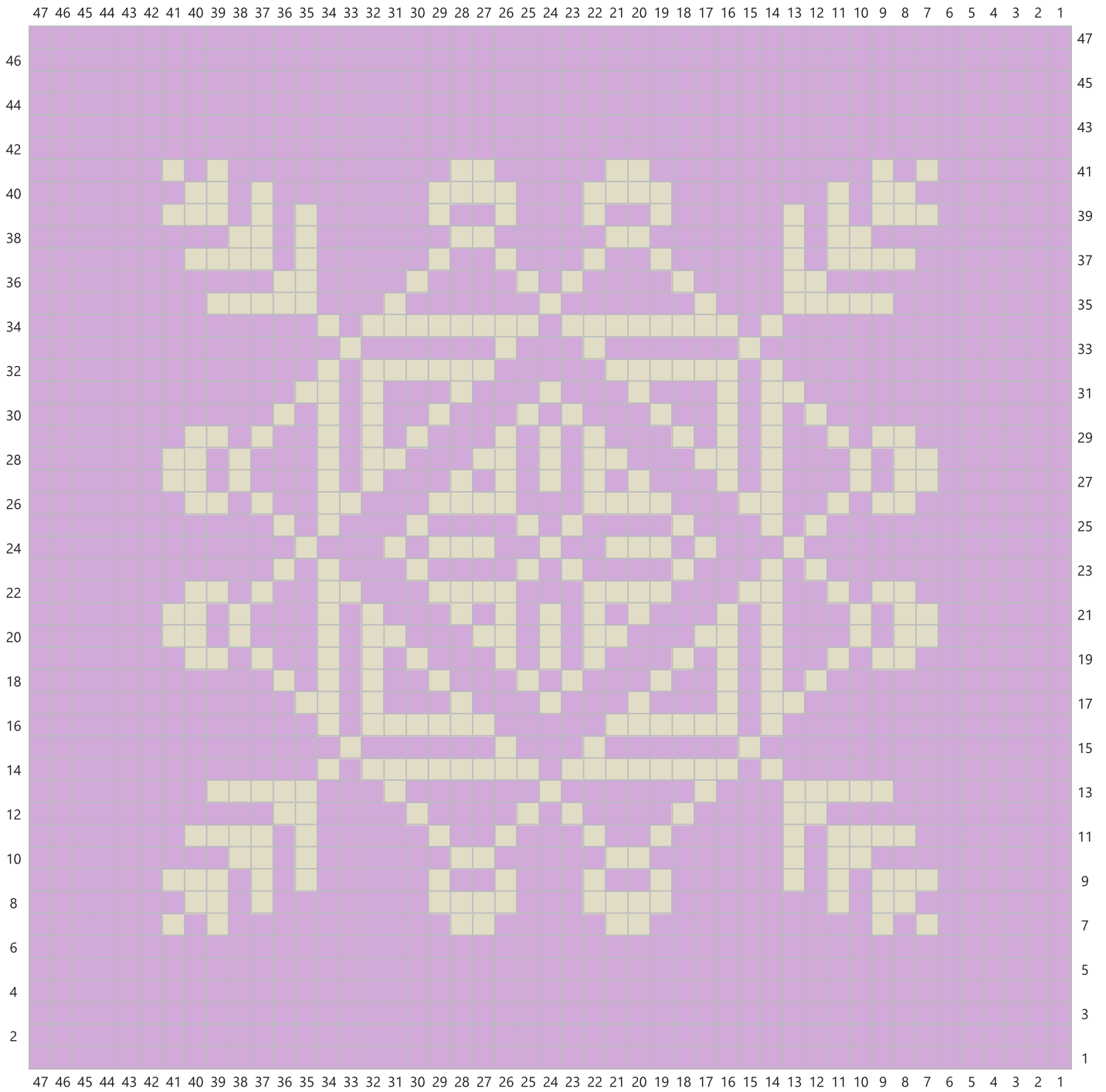
When working using the strandtarsia colourwork technique, work the edges around the central motif using the main colour yarn only. Work the central motif using the colour shown on the chart, stranding the colour not in use across the wrong side of the work, taking care not to pull too tight or leave too loose.

Do not twist the colours together where they meet, but instead, at the end of each row, 'anchor' the contrast colour yarn two sts away from where it will first be used on the next row (the outer edge of the central motif) by twisting it together with the main colour yarn at this point. This will allow you to strand it across the two sts to the first point it is used on the following row, keeping your tension consistent.

Always strand consistently, stranding the main colour yarn when not in use above the contrast colour yarn. This helps the contrast colour patterning stand out very slightly against the background.



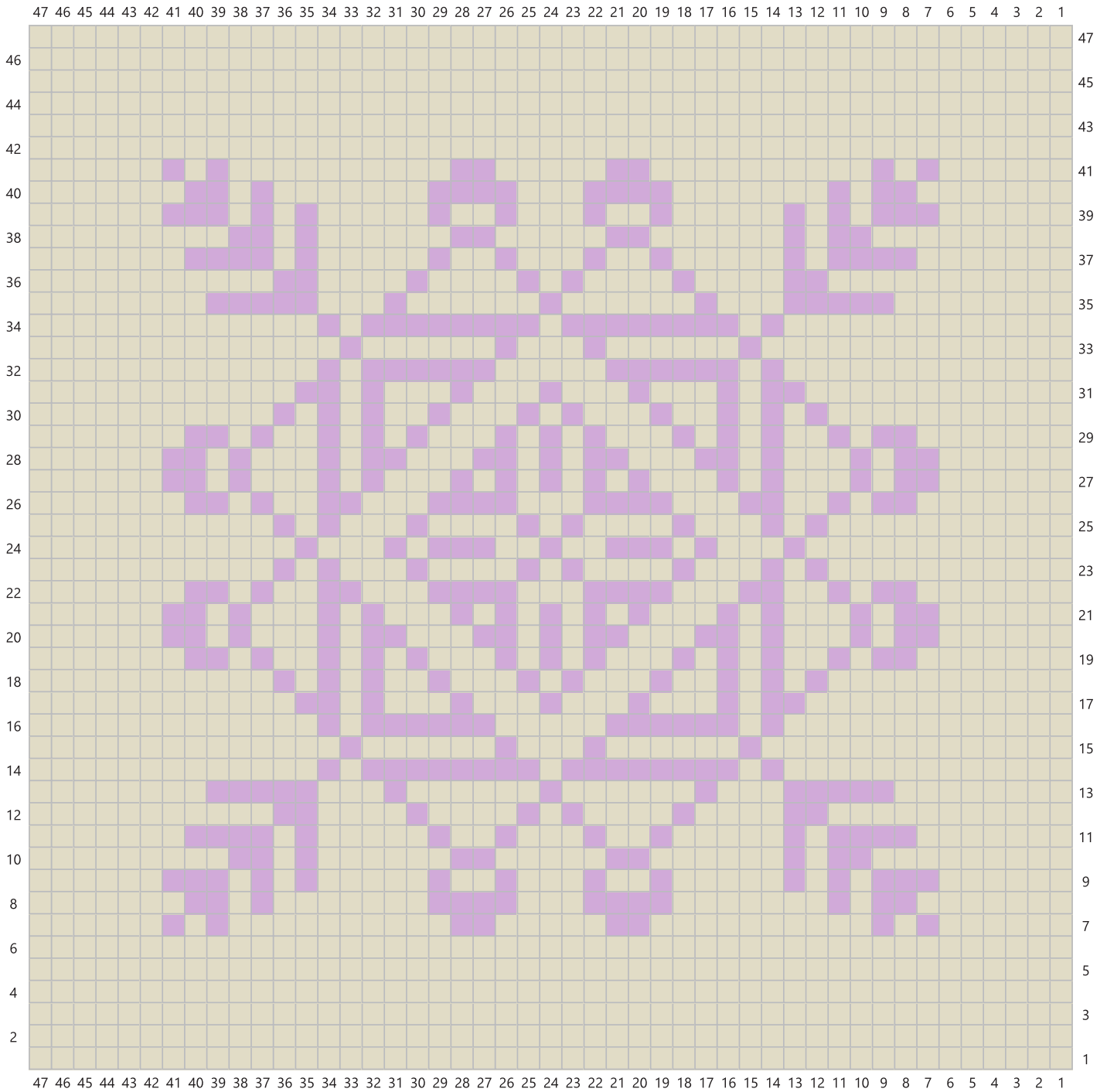
Maze – Chart A



- Key**
- Blackcurrant (319)
 - Sand (208)
 - RS: Knit
WS: Purl



Maze – Chart B



Key

- Blackcurrant (319)
- Sand (208)
- RS: Knit
WS: Purl

WEST YORKSHIRE SPINNERS



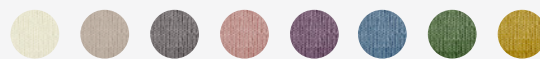
Meadow

Botanical Garden Colourwork Blanket
Part Seven

Designed by Rosee Woodland

Pure
100% Falkland Islands Wool

Skill Level: ●●●○○



Measurements

Size

One size

Blanket

85cm wide x 83cm tall after blocking

Panels

20cm wide x 19.5cm tall after blocking

Edging

2.5cm wide

Yarn – blanket panels



West Yorkshire Spinners Pure DK
Rosemary (381)
1 x 50g hank



West Yorkshire Spinners Pure DK
Blush (287)
1 x 50g hank



West Yorkshire Spinners Pure DK
Natural (010)
1 x 50g hank



West Yorkshire Spinners Pure DK
River (194)
1 x 50g hank



West Yorkshire Spinners Pure DK
Blackcurrant (319)
1 x 50g hank



West Yorkshire Spinners Pure DK
Sand (208)
1 x 50g hank



West Yorkshire Spinners Pure DK
Dandelion (446)
1 x 50g hank



West Yorkshire Spinners Pure DK
Mist (166)
1 x 50g hank

Yarn – blanket edging



West Yorkshire Spinners Pure DK
Sand (208)
1 x 50g hank

Materials

- Pair of 4mm (UK8/US6) knitting needles, for panels
- 3.25mm (UK10/US3) circular knitting needle, 120cm or 150cm long for edging
- Eight hinged stitch markers for edging
- One contrast colour stitch marker for edging
- Optional – one metre of cotton jersey and matching polyester sewing thread for backing

Stranded colourwork tension

26 sts and 26 rows to 10cm measured over stranded colourwork using 4mm needles before blocking

24 sts and 24 rows to 10cm measured over stranded colourwork using 4mm needles after blocking

Strandtarsia colourwork tension

26 sts and 27 rows to 10cm measured over strandtarsia colourwork using 4mm needles before blocking

24 sts and 24.5 rows to 10cm measured over strandtarsia colourwork using 4mm needles after blocking

Note: This pattern uses almost all the yarn specified. Treat the first panel in each technique as your tension swatch. Working to the tension given is very important otherwise more yarn will be needed.

Blocking is essential for this pattern.

Abbreviations

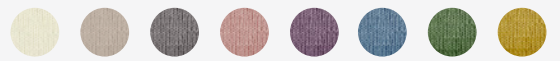
alt	alternate
cont	continue
fol	following
inc	increase
K	knit
Kfb	knit into the front and back of the st. 1 st increased
P	purl
Pfb	purl into the front and back of the st. 1 st increased
pm	place marker
rep	repeat
RS	right side
sm	slip marker
st(s)	stitch(es)
WS	wrong side

100% FALKLAND ISLANDS WOOL

DK	4mm US6	4mm USG6
Tension 10cm/4"sq	112 122	50g
	Metres Yards	Hank
28 rows 		
22sts	Reshape whilst damp	

HAND WASH ONLY

100% WOOL/WOLLE/LANA/LAINE/YLLE/VILLA



Resources

To help you with your Botanical Garden colourwork blanket, we've added some helpful video tutorials, covering the techniques you'll need, to our YouTube channel.

Click on the links below or search 'West Yorkshire Spinners' on YouTube to view:

Stranded Colourwork



Strandtarsia



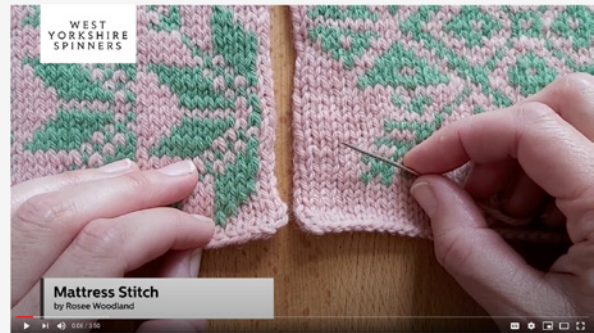
Weaving In Ends



Blocking



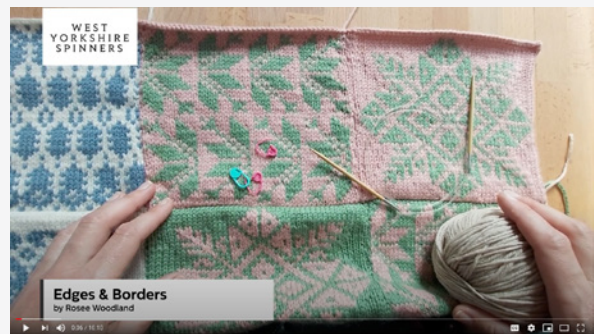
Mattress Stitch

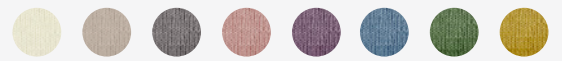


False Grafting



Edges and Borders





Blanket panel

Using 4mm needles cast on 47 sts using the colour shown on the chart for Row 1 of your panel.

Note: If using the long tail cast on, count your cast-on row as Row 1 of the chart and start working on WS of work from Row 2.

Row 1 (RS): Knit to end, following colours shown on Row 1 of chart from right to left and using the colourwork method given for your panel (see below).

Row 2 (WS): Purl to end, following colours shown on Row 2 of chart from left to right using the colourwork method given for your panel (see below).

These 2 rows set pattern.

Cont in pattern as set, working each row of chart once until you have completed Row 47.

Cast off evenly to match the tension of the cast-on edge.

Weave in ends and block panel to measurements given.



Stranded colourwork technique panels (eight in total)

Make one of each in colourway A and colourway B.

- Allotment (week 1, part 1)
- Lavender (week 2, part 3)
- Verbena (week 3, part 5)
- Meadow (week 4, part 7)

When working using the stranded colourwork technique, strand the colour not in use across the wrong side of the work, taking care not to pull too tight or leave too loose.

Twist the colours together at the beginning of every row.

Always strand consistently, stranding the main colour yarn when not in use above the contrast colour yarn. This helps the contrast colour patterning stand out very slightly against the background.

Strandtarsia colourwork technique panels (eight in total)

Make 1 of each in colourway A and colourway B.

- Potager (week 1, part 2)
- Cornflower (week 2, part 4)
- Maze (week 3, part 6)
- Sunflower (week 4, part 8)

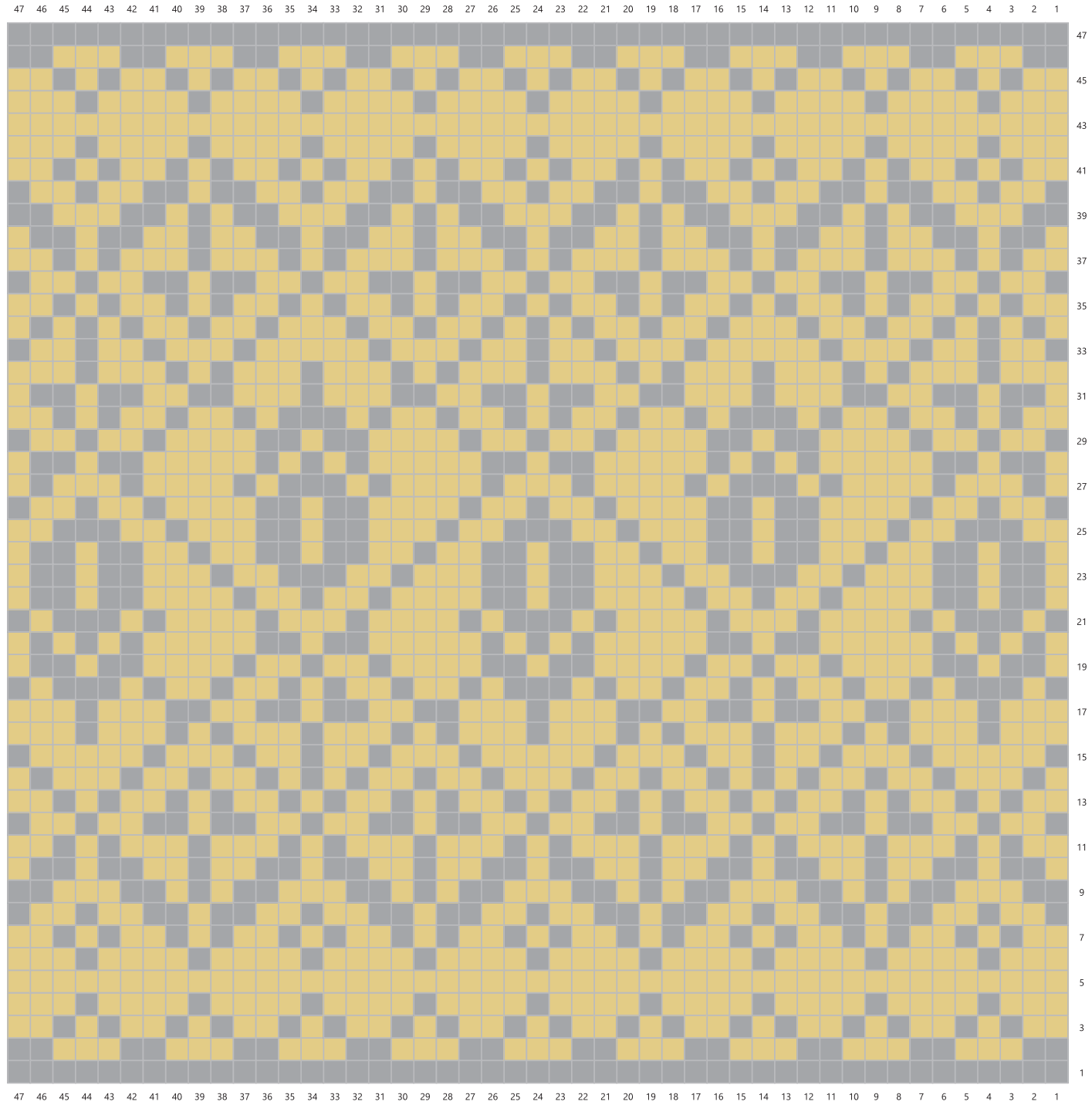
When working using the strandtarsia colourwork technique, work the edges around the central motif using the main colour yarn only. Work the central motif using the colour shown on the chart, stranding the colour not in use across the wrong side of the work, taking care not to pull too tight or leave too loose.

Do not twist the colours together where they meet, but instead, at the end of each row, 'anchor' the contrast colour yarn two sts away from where it will first be used on the next row (the outer edge of the central motif) by twisting it together with the main colour yarn at this point. This will allow you to strand it across the two sts to the first point it is used on the following row, keeping your tension consistent.

Always strand consistently, stranding the main colour yarn when not in use above the contrast colour yarn. This helps the contrast colour patterning stand out very slightly against the background.



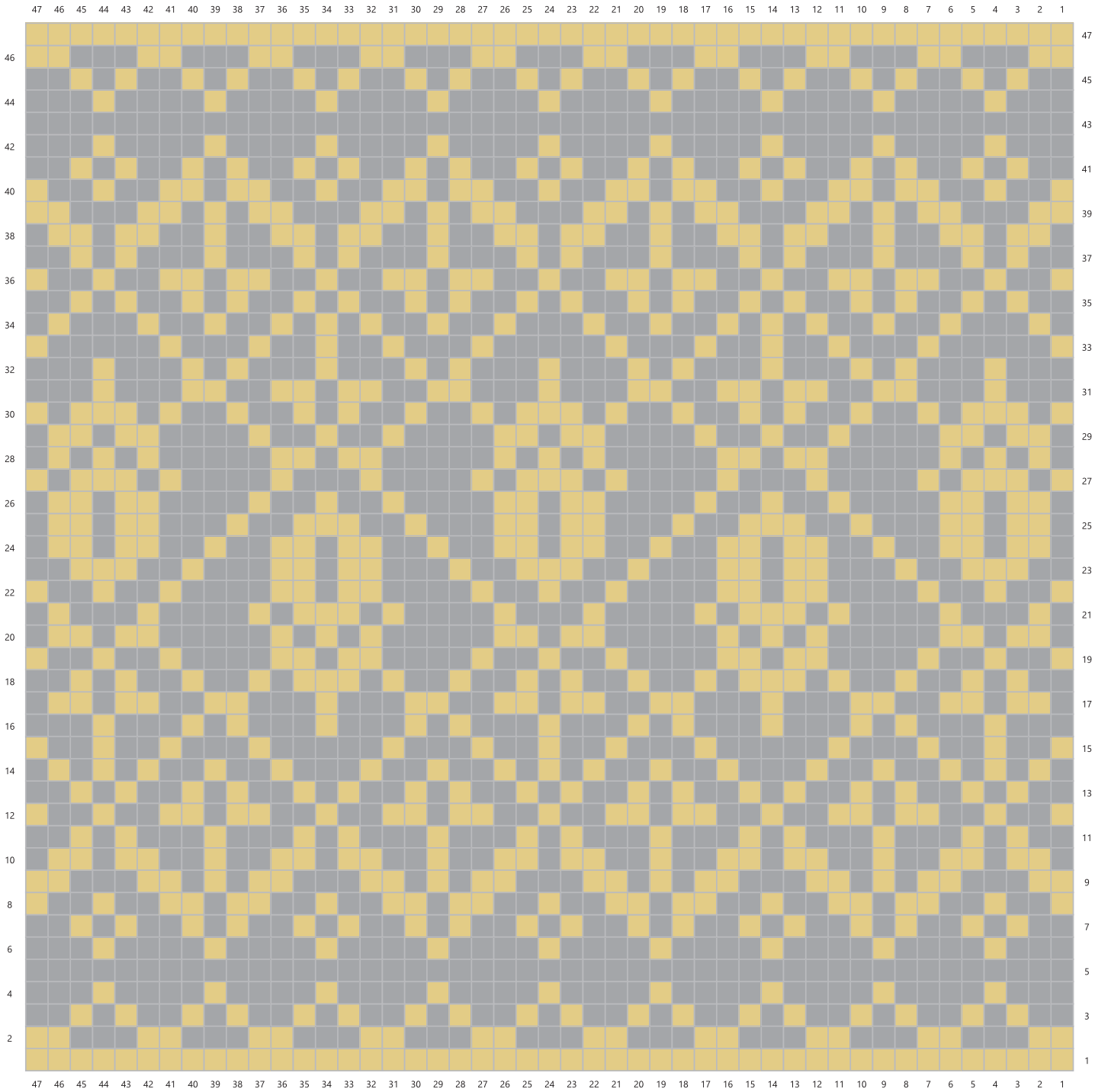
Meadow – Chart A



- Key**
- Mist (166)
 - Dandelion (446)
 - RS: Knit
 - WS: Purl



Meadow – Chart B



Key

-  Mist (166)
-  Dandelion (446)
-  RS: Knit
-  WS: Purl

WEST YORKSHIRE SPINNERS



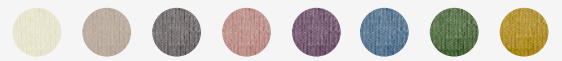
Sunflower

Botanical Garden Colourwork Blanket
Part Eight

Designed by Rosee Woodland

Pure
100% Falkland Islands Wool

Skill Level: ●●●○○



Measurements

Size

One size

Blanket

85cm wide x 83cm tall after blocking

Panels

20cm wide x 19.5cm tall after blocking

Edging

2.5cm wide

Yarn – blanket panels



West Yorkshire Spinners Pure DK
Rosemary (381)
1 x 50g hank



West Yorkshire Spinners Pure DK
Blush (287)
1 x 50g hank



West Yorkshire Spinners Pure DK
Natural (010)
1 x 50g hank



West Yorkshire Spinners Pure DK
River (194)
1 x 50g hank



West Yorkshire Spinners Pure DK
Blackcurrant (319)
1 x 50g hank



West Yorkshire Spinners Pure DK
Sand (208)
1 x 50g hank



West Yorkshire Spinners Pure DK
Dandelion (446)
1 x 50g hank



West Yorkshire Spinners Pure DK
Mist (166)
1 x 50g hank

Yarn – blanket edging



West Yorkshire Spinners Pure DK
Sand (208)
1 x 50g hank

Materials

- Pair of 4mm (UK8/US6) knitting needles, for panels
- 3.25mm (UK10/US3) circular knitting needle, 120cm or 150cm long for edging
- Eight hinged stitch markers for edging
- One contrast colour stitch marker for edging
- Optional – one metre of cotton jersey and matching polyester sewing thread for backing

Stranded colourwork tension

26 sts and 26 rows to 10cm measured over stranded colourwork using 4mm needles before blocking

24 sts and 24 rows to 10cm measured over stranded colourwork using 4mm needles after blocking

Strandtarsia colourwork tension

26 sts and 27 rows to 10cm measured over strandtarsia colourwork using 4mm needles before blocking

24 sts and 24.5 rows to 10cm measured over strandtarsia colourwork using 4mm needles after blocking

Note: This pattern uses almost all the yarn specified. Treat the first panel in each technique as your tension swatch. Working to the tension given is very important otherwise more yarn will be needed.

Blocking is essential for this pattern.

Abbreviations

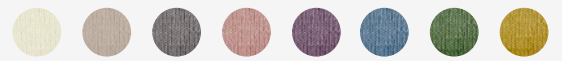
alt	alternate
cont	continue
fol	following
inc	increase
K	knit
Kfb	knit into the front and back of the st. 1 st increased
P	purl
Pfb	purl into the front and back of the st. 1 st increased
pm	place marker
rep	repeat
RS	right side
sm	slip marker
st(s)	stitch(es)
WS	wrong side

100% FALKLAND ISLANDS WOOL

DK	4mm US6	4mm USG6
Tension 10cm/4"sq	112 122	50g
	Metres Yards	Hank
28 rows 22sts		
Reshape whilst damp		

HAND WASH ONLY

100% WOOL/WOLLE/LANA/LAINE/YLLE/VILLA



Blanket panel

Using 4mm needles cast on 47 sts using the colour shown on the chart for Row 1 of your panel.

Note: If using the long tail cast on, count your cast-on row as Row 1 of the chart and start working on WS of work from Row 2.

Row 1 (RS): Knit to end, following colours shown on Row 1 of chart from right to left and using the colourwork method given for your panel (see below).

Row 2 (WS): Purl to end, following colours shown on Row 2 of chart from left to right using the colourwork method given for your panel (see below).

These 2 rows set pattern.

Cont in pattern as set, working each row of chart once until you have completed Row 47.

Cast off evenly to match the tension of the cast-on edge.

Weave in ends and block panel to measurements given.



Stranded colourwork technique panels (eight in total)

Make one of each in colourway A and colourway B.

- Allotment (week 1, part 1)
- Lavender (week 2, part 3)
- Verbena (week 3, part 5)
- Meadow (week 4, part 7)

When working using the stranded colourwork technique, strand the colour not in use across the wrong side of the work, taking care not to pull too tight or leave too loose.

Twist the colours together at the beginning of every row.

Always strand consistently, stranding the main colour yarn when not in use above the contrast colour yarn. This helps the contrast colour patterning stand out very slightly against the background.

Strandtarsia colourwork technique panels (eight in total)

Make 1 of each in colourway A and colourway B.

- Potager (week 1, part 2)
- Cornflower (week 2, part 4)
- Maze (week 3, part 6)
- Sunflower (week 4, part 8)

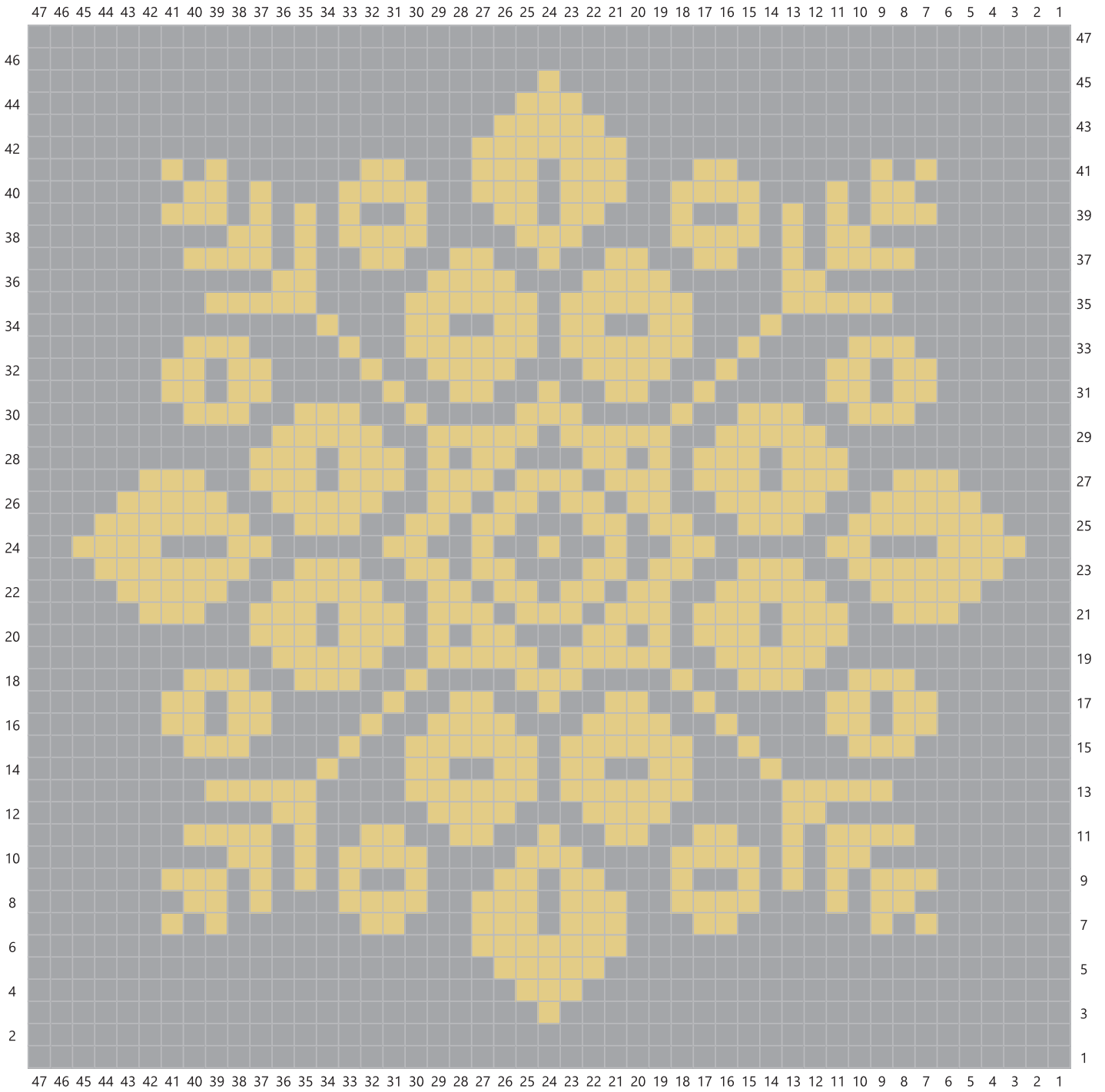
When working using the strandtarsia colourwork technique, work the edges around the central motif using the main colour yarn only. Work the central motif using the colour shown on the chart, stranding the colour not in use across the wrong side of the work, taking care not to pull too tight or leave too loose.

Do not twist the colours together where they meet, but instead, at the end of each row, ‘anchor’ the contrast colour yarn two sts away from where it will first be used on the next row (the outer edge of the central motif) by twisting it together with the main colour yarn at this point. This will allow you to strand it across the two sts to the first point it is used on the following row, keeping your tension consistent.

Always strand consistently, stranding the main colour yarn when not in use above the contrast colour yarn. This helps the contrast colour patterning stand out very slightly against the background.



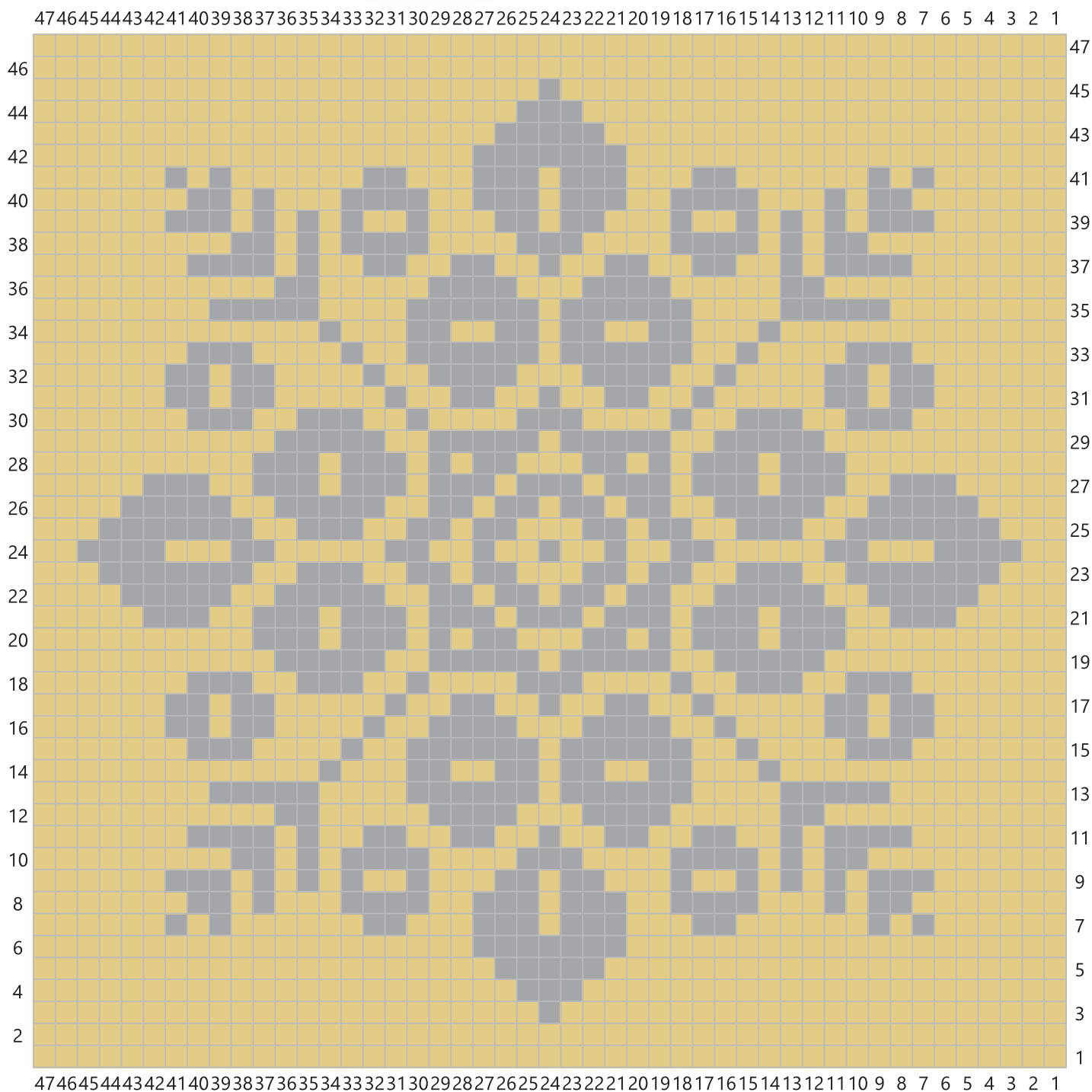
Sunflower – Chart A



- Key**
- Mist (166)
 - Dandelion (446)
 - RS: Knit
 - WS: Purl



Sunflower – Chart B



- Key**
- Mist (166)
 - Dandelion (446)
 - RS: Knit
WS: Purl

WEST YORKSHIRE SPINNERS



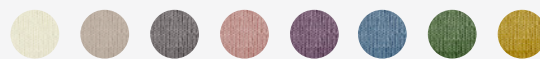
Pure
100% Falkland Islands Wool

Making Up

**Botanical Garden Colourwork Blanket
Part Nine**

Designed by Rosee Woodland

Skill Level: ●●●○○



Measurements

Size

One size

Blanket

85cm wide x 83cm tall after blocking

Panels

20cm wide x 19.5cm tall after blocking

Edging

2.5cm wide

Yarn – blanket panels



West Yorkshire Spinners Pure DK
Rosemary (381)
1 x 50g hank



West Yorkshire Spinners Pure DK
Blush (287)
1 x 50g hank



West Yorkshire Spinners Pure DK
Natural (010)
1 x 50g hank



West Yorkshire Spinners Pure DK
River (194)
1 x 50g hank



West Yorkshire Spinners Pure DK
Blackcurrant (319)
1 x 50g hank



West Yorkshire Spinners Pure DK
Sand (208)
1 x 50g hank



West Yorkshire Spinners Pure DK
Dandelion (446)
1 x 50g hank



West Yorkshire Spinners Pure DK
Mist (166)
1 x 50g hank

Yarn – blanket edging



West Yorkshire Spinners Pure DK
Sand (208)
1 x 50g hank

Materials

- Pair of 4mm (UK8/US6) knitting needles, for panels
- 3.25mm (UK10/US3) circular knitting needle, 120cm or 150cm long for edging
- Eight hinged stitch markers for edging
- One contrast colour stitch marker for edging
- Optional – one metre of cotton jersey and matching polyester sewing thread for backing

Stranded colourwork tension

26 sts and 26 rows to 10cm measured over stranded colourwork using 4mm needles before blocking

24 sts and 24 rows to 10cm measured over stranded colourwork using 4mm needles after blocking

Strandtarsia colourwork tension

26 sts and 27 rows to 10cm measured over strandtarsia colourwork using 4mm needles before blocking

24 sts and 24.5 rows to 10cm measured over strandtarsia colourwork using 4mm needles after blocking

Note: This pattern uses almost all the yarn specified. Treat the first panel in each technique as your tension swatch. Working to the tension given is very important otherwise more yarn will be needed.

Blocking is essential for this pattern.

Abbreviations

alt	alternate
cont	continue
fol	following
inc	increase
K	knit
Kfb	knit into the front and back of the st. 1 st increased
P	purl
Pfb	purl into the front and back of the st. 1 st increased
pm	place marker
rep	repeat
RS	right side
sm	slip marker
st(s)	stitch(es)
WS	wrong side

100% FALKLAND ISLANDS WOOL

DK	4mm US6	4mm USG6
Tension 10cm/4"sq	112 122	50g
	Metres Yards	Hank
28 rows 22sts		
Reshape whilst damp		

HAND WASH ONLY

100% WOOL/WOLLE/LANA/LAINE/YLLE/VILLA



Making up

To make up

To block your blanket panels soak them in lukewarm water, roll in a towel to squeeze out excess moisture and pin out to measurements on a blocking mat or folded towel. Leave to dry.

Following the image as a guide, or choosing your own layout, seam 2 panels together along their vertical edges using mattress stitch. Rep until you have 4 panels in a row.

Rep for the remaining 3 rows.

Join rows together using false grafting or backstitch.



Blanket edging

Using 3.25mm circular needles and your edging colour yarn, with **RS** facing and starting halfway through a panel up the right hand vertical edge, pick up and knit 4 sts for every 5 rows until you reach your first corner, ending with an odd number of sts, pm pick up and knit the first st of the top horizontal edge, pm, pick up and knit 1 st for every available st along the top edge, making a note of how many sts you've made, ending with an odd number along the top edge, pm pick up and knit the first st of the left hand vertical edge, pm, pick up and knit 4 sts for every 5 rows down the left hand vertical edge, making a note of how many sts you've made, and ending with an odd number of sts, place a marker, pick up and knit the first st of the bottom vertical edge, pm, pick up and knit along the bottom horizontal edge, matching the number of sts between markers along the top horizontal edge, pm, pick up and knit the first st of the right hand vertical edge, pm, pick up and knit 4 sts for every 5 rows up the right hand vertical edge until you are back at the beginning, ensuring you match the number of sts between markers along the left hand vertical edge. Place a contrast colour marker to mark the beginning of the round.

Round 1 (inc): *(K1, p1) to 1 st before marker, kfb, sm, kfb, replace next marker between the knitted st and the inc just made, so that 1 st remains between markers at corner; repeat from * 3 times more, (k1, p1) to end. 8 sts inc.

Round 2: (P1, k1) to marker, sm, k1, sm, * (k1, p1) to 1 st before marker, k1, sm, k1, sm; rep from * 2 times more, (k1, p1) to last st, k1.

These 2 rounds set 1x1 moss st. Cont to work knit sts over purl sts and purl sts over knit sts on each following round.

Round 3 (inc): *Work in moss st as set to 1 st before marker, pfb, sm, kfb, replace next marker between the knitted st and the inc just made, so that 1 st remains between markers at corner; repeat from * 3 times more, moss st to end. 8 sts inc.

Work 5 more rounds, inc as set at corners on every alt round, and ending with a round without incs. 8 rounds worked. 32 sts inc.

Next round (inc and cast off): *Cast off in moss st to 1 st before marker, (kfb into next st, slip new inc st purlwise to left needle, cast off first over second st as normal on right needle, slip inc st purlwise to right needle, cast off first over second st as normal on right needle, remove marker) twice (2 sts increased at corner as they are cast off); rep from * 3 times more, cast off in moss st to end.

Weave in ends.

Block out blanket to finished measurements and cover with a damp cloth.

Add fabric backing (optional)

After blocking you can add fabric backing to the wrong side of your blanket.

Cut a panel of fabric to size, allowing for 1cm hem.

Hem fabric on all edges.

Hand sew to the wrong side of the blanket, just over the join between the panels and the edging, using whip stitch.

WEST YORKSHIRE SPINNERS

Join our Facebook community

 [WYS Crafter's Hub](#)

UNIT 2 AIREDALE PARK, ROYD INGS AVENUE, KEIGHLEY, WEST YORKSHIRE BD21 4DG

(0)1535 664500 SALES@WYSPINNERS.COM WYSPINNERS.COM